

MOEN® 摩恩

淋浴杆

安装说明书

Shower Bar

INSTALLATION INSTRUCTIONS

如需安装支持，配件丢失等，请联系MOEN。
(中国) 400-630-8866
www.moen.cn

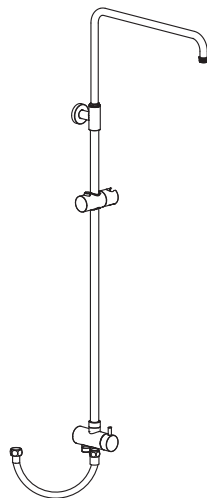
PLEASE CONTACT MOEN FIRST
For Installation Help, Missing or Replacement
Parts
(China) 400-630-8866
www.moen.cn

推荐工具

为了安全和让安装和替换变得容易，Moen建议您使用以下工具：

HELPFUL TOOLS

For safety and ease of replacement, Moen recommends the use of these helpful tools.

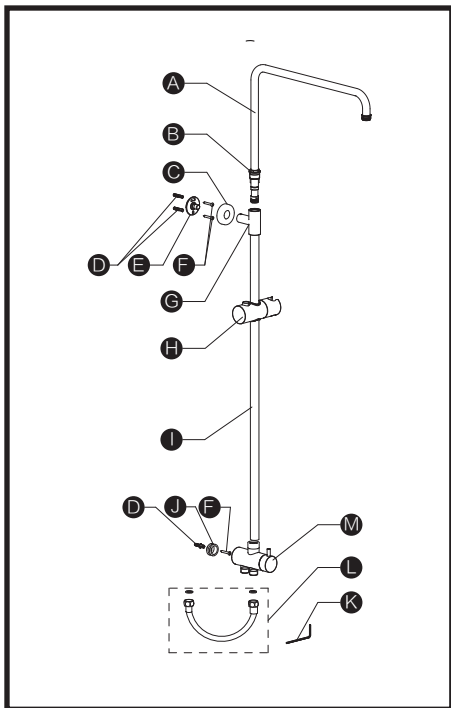


图片仅供参考
(款式因型号而异)

Image is for reference only
(Style varies by model)

记录购买的型号：
(保存安装说明书以备将来参考)

Record Purchased Model Number:
(Save instruction sheet for future reference)



零件清单

- A. 弯管
- B. 螺母
- C. 法兰盖
- D. 膨胀管
- E. 上固定座
- F. 自攻螺钉
- G. 墙座
- H. 滑座
- I. 直管
- J. 下固定座
- K. 内六角扳手
- L. 金属软管
- M. 切换阀

Parts List

- A. Bended Tube
- B. Nut
- C. Flange
- D. Wall Plug
- E. Top Fixing Ring
- F. Tapping Screw
- G. Bracket
- H. Slider
- I. Straight Tube
- J. Bottom Fixing Ring
- K. Hex Wrench
- L. Flexible Hose
- M. Diverter

安装前注意事项

警告：在墙上钻任何孔时，请确保在您准备钻孔的地方没有隐蔽的管道和线缆！

申明：本公司保留更改产品结构不另行通知的权利。

安装注意事项：

1. 本产品已经出厂检测及调试，请勿自行拆卸。
2. 安装前，请务必先清除墙体预埋水管内的杂质及污泥，以免影响出水功能。
3. 本产品的工作压力：0.05MPa~0.6MPa。
推荐工作压力：0.2MPa~0.5MPa。
4. 当您在钻孔和安装时请注意安全。

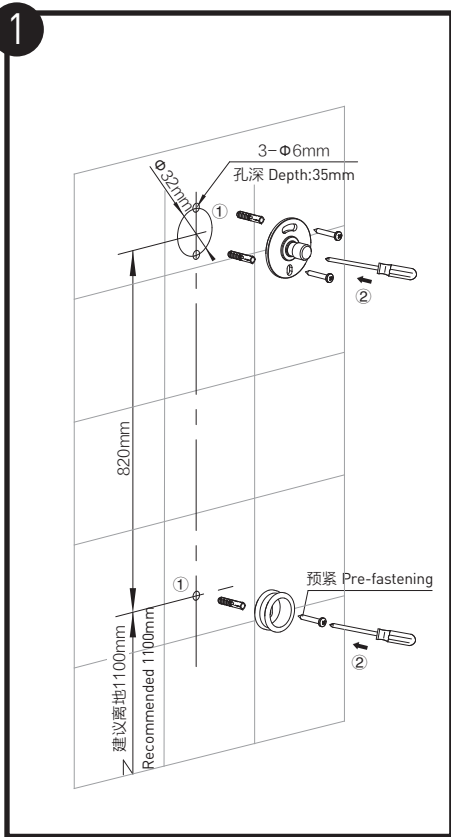
Precautions before installation

Warning: Please make sure there are no hidden service pipes or cables where you start to drill the wall.

Declare: We hereby reserve the rights to amend the specification without prior notification.

ATTENTIONS BEFORE INSTALLATION

1. The product has passed functionality tests before sale, please do not disassemble the product by yourself at will.
2. Clear your plumbing to avoid any debris from impacting on product performance.
3. The working pressure of this product is 0.05MPa~0.6MPa. The recommended working pressure is 0.2MPa~0.5MPa.
4. Be careful in your installation.

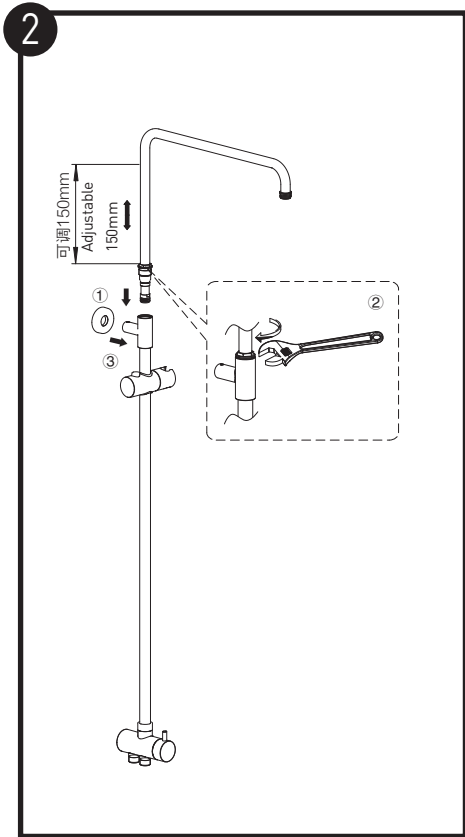


安装固定座:

1. 如图所示, 用 $\Phi 6\text{mm}$ 的钻头在墙上钻3个深35mm的孔, 固定座中心距为820mm。将膨胀管打进孔内, 膨胀管端面不能凸出墙面。
2. 下固定座凹面朝外, 用自攻螺钉预紧, 方便后面调整。锁紧上固定座。

Install the fixing ring:

1. Drill three 35mm depth holes by $\Phi 6\text{mm}$ drillhead. Make sure wall plug does not stick out.
2. Put bottom fixing ring concave outwards, and pre-fastening it with tapping screw. Fasten top fixing ring.



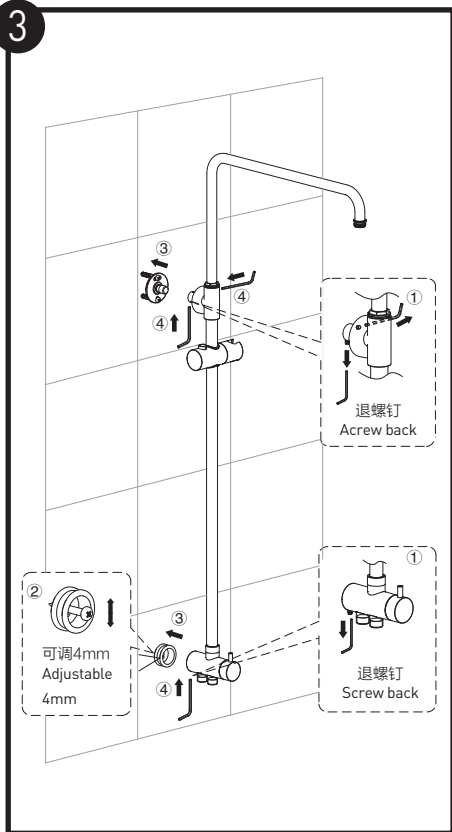
组装管件:

1. 将弯管插入直管内, 根据需要调整弯管高度。
2. 锁紧螺母。
3. 套入法兰盖。

Assemble the tubes:

1. Put the bended tube into the straight tube. Adjust the height of the bended tube.
2. Screw the nut.
3. Put the flange onto bracket.

3



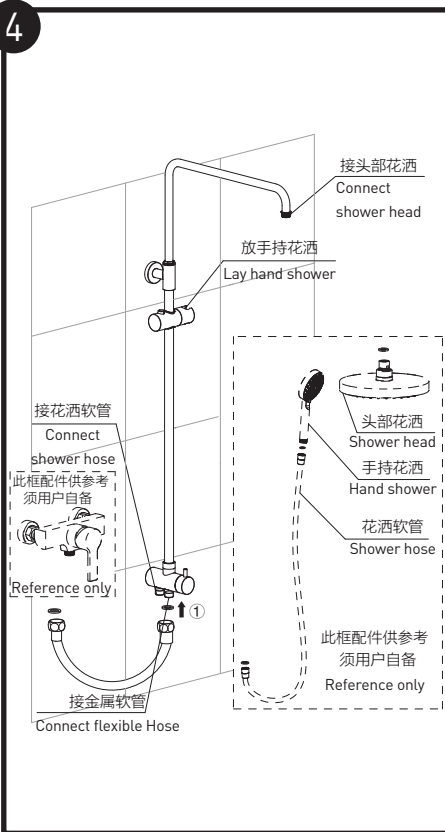
安装淋浴杆：

1. 分别退墙座和切换阀下端螺钉，使螺钉不凸出内表面。
2. 将淋浴器试装入上、下固定座，依图2微调下固定座，确保淋浴器能装入，然后锁紧固定座。
3. 如图所示，将淋浴器装入上、下固定座。
4. 分别锁紧墙座和切换阀螺钉。

Install the fixing ring:

1. Screw back both screws of the bracket and diverter.
2. Adjust the fixing rings to make the distance between the fixing rings as same as the bar shower. Then fasten them by the tapping screw.
3. Put the bar shower onto the fixing rings.
4. Fasten screws of the bracket and the diverter.

4



安装其它卫浴配件(虚线产品仅供参考)：

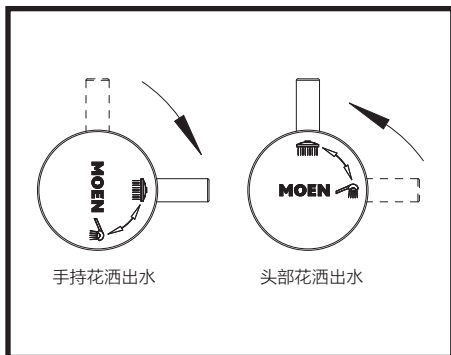
1. 将两端放有垫片的金属软管分别与切换阀和龙头连接旋紧。
2. 安装后请检查各连接处是否连接紧密、管道是否有泄漏，整体安装是否牢固。确定各部良好后，可放水试用，检查连接处是否漏水。

Install other bathroom accessories: (Dashed area for reference only)

1. Connect the faucet and bar shower with hose.
2. Check up every step to ensure the stability and tightness to avoid any leaking before testing the shower spray.

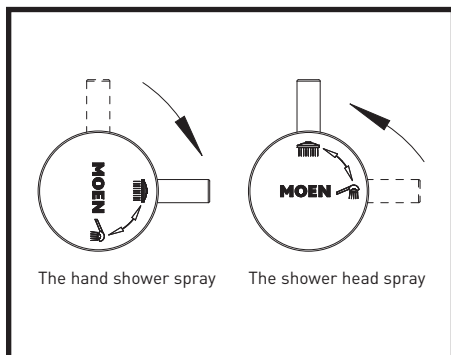
产品使用说明和注意事项

- 切换阀把手顺时针旋转，手持花洒出水。
- 切换阀把手逆时针旋转，头部花洒出水。



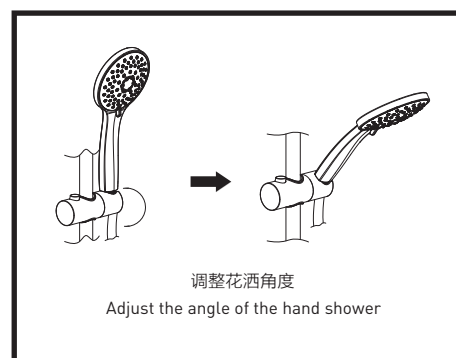
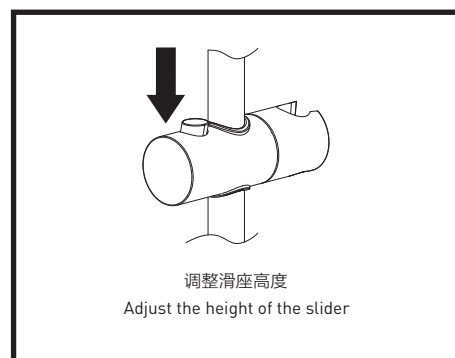
Usage Instructions and Caution

- Clockwise rotation, the hand shower spray.
- Counterclockwise, the shower head spray.



- 按下滑座的按钮，可调整滑座高度。
- 旋转滑座放手持花洒的位置，可调整手持花洒角度。

- Press the slider button, you can adjust the height of the slider.
- Rotate the slider bracket, hand shower angle can be adjusted.



⚠ 警告：当您使用本产品进行淋浴时，请先开启冷水然后再开启热水，以免烫伤！

⚠ Warning: When you are showering, please turn on the cold water first, and then hot water to avoid scalding.

清洁护理：

1. 为保持产品洁净，请定期清洁。
2. 先用清水或温和的液体清洁剂清洗，然后用清水冲洗，再用软棉布抹干。
3. 切勿使用任何具有酸性和研磨作用的清洁剂。
4. 切勿使用钢丝球等坚硬的物品清洗产品表面。

MAINTENANCE:

1. Keep the product clean with clean water or mild liquid detergent regularly.
2. Rinse with clean water, and wipe with soft cotton.
3. Acid or abrasive detergents are prohibited.
4. Steel ball or hard materials are prohibited.

