

罗马浴缸龙头水嘴把手组件

安装说明书

Trim for Roman
Tub Shower Faucet

INSTALLATION INSTRUCTIONS

如需安装支持，配件丢失等，请联系MOEN。
(中国) 400-630-8866
www.moen.cn

PLEASE CONTACT MOEN FIRST
For Installation Help, Missing or Replacement
Parts
(China) 400-630-8866
www.moen.cn

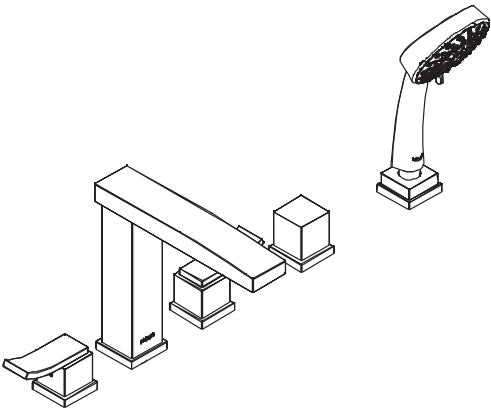
推荐工具

为了安全和让安装和替换变得容易，Moen建议您使用以下工具：

HELPFUL TOOLS

For safety and ease of replacement, Moen recommends the use of these helpful tools.

 护目镜 Safety Glasses	 螺纹密封带 Thread Seal Tape	 管钳 Basin Wrench	 钳子 Pliers
 螺丝刀 Screwdriver	 手电筒 Flashlight	 活动扳手 Adjustable Wrench	 密封胶 Plumber's Putty

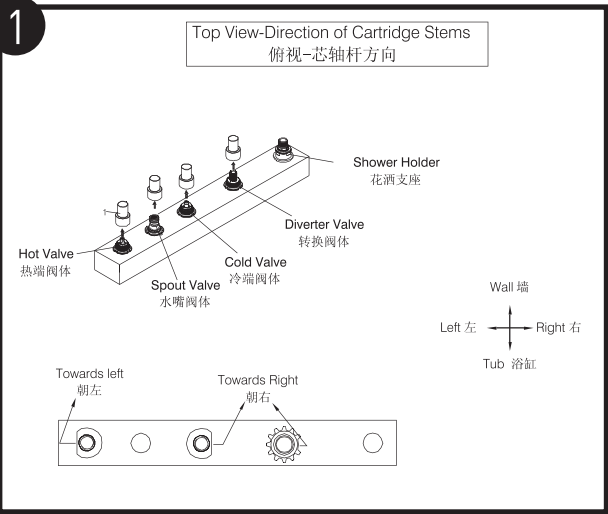


图片仅供参考
(款式因型号而异)

Image is for reference only
(Style varies by model)

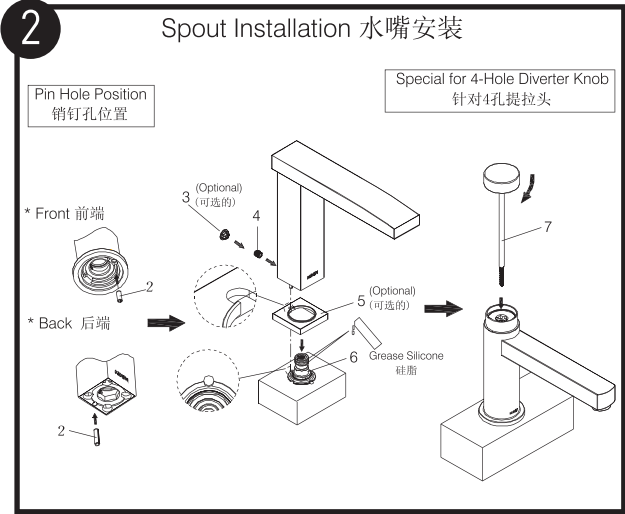
记录购买的型号：
(保存安装说明书以备将来参考)

Record Purchased Model Number:
(Save instruction sheet for future reference)



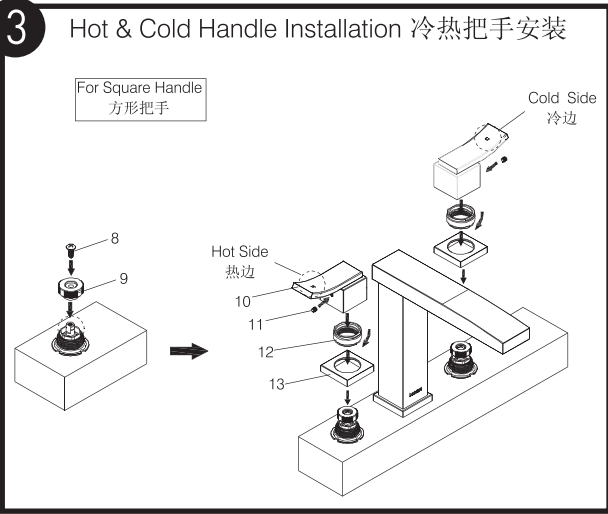
取走保护套。确保各芯轴接头朝向正确，如上图所示。

Take out the cover(1). Make sure the cartridge stems towards correction direction as shown above.



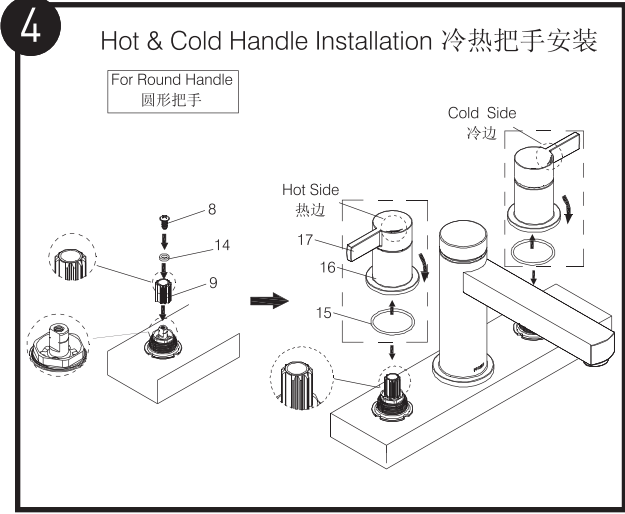
将销钉(2)塞入水嘴底部销钉孔内。在水嘴接头(6)的O型圈处涂适量硅脂。如产品中有装饰罩(5)，则先装装饰罩。装水嘴并将其调至正确的使用方向，从后部锁紧水嘴螺丝(4)。如产品中有塞钮(3)，则塞入塞钮(3)。如为4孔产品，还需将提拉杆(7)穿入水嘴拧至水嘴接头(6)内的提拉杆。

Insert pin(2) to bottom of the spout. Apply grease silicone to the two o-rings on the spout nipple(6). Install escutcheon(5) if it was included in the product. Install spout and set to correct direction. Thread screw(4) to back of spout and tighten. Insert plug(3) if it (6) . was included in the product. For 4-hole products, put the lift rod(7) through spout and thread to diverter stem in spout nipple.



将把手接头(9)装至芯轴杆并拧紧螺丝(8)。正确放置装饰罩(13)并拧紧锁紧螺母(12)使装置罩(13)贴紧台面。分别顺时针旋转左侧把手接头(9)及逆时针旋转右侧把手接头(9)直至尽头。如上图所示安装把手(10)，并锁紧把手螺丝(11)。

Insert handle connector(8) and thread screw(9). Install escutcheon(13) and set to correct direction. Thread escutcheon nut(12) to tighten esuchon(13) against to desk. Rotate the handle connector(9) to end clockwise at left side and counter-clockwise at right side. Install handle(10) as shown and thread set screw(11) to tighten the handle(10).



将把手接头(9)装至芯轴杆，塞入垫片(14)并拧紧螺丝(8)。分别顺时针旋转左侧把手接头(9)及逆时针旋转右侧把手接头(9)直至尽头。将O型圈装至把手座(16)底部，如图示装把手组件并旋转把手(16)直至其贴紧台面。

Insert handle connector(9) to cartridge stem, insert washer(14) and thread screw(8). Rotate the handle connector(9) to end clockwise at left side and counter-clockwise at right side. Insert o-ring(15) to bottom of handle hub(16). Install handle assembly(16 & 17) as shown and rotate the handle hub(16) until it is against the desk.

移除旧龙头注意事项：
拆除现有水龙头或拆卸阀门之前，请务必先关闭供水。打开水龙头手柄以释放水压，确保完全关闭水源。

CAUTION — TIPS FOR REMOVAL OF OLD FAUCET:
Always turn water supply OFF before removing existing faucet or disassembling the valve.
Open faucet handle to relieve water pressure and ensure that complete water shut-off has been accomplished.

5

Diverter Handle Installation (for 5-hole products)

转换把手安装（针对5孔产品）

For Square Handle

方形把手

For Round Handle

圆形把手

方形把手：正确放置装饰罩(13)并拧紧把手接头(20)使装置罩(13)贴紧台面。逆时针旋转把手接头(20)直至尽头。如上图所示安装把手(18)，使其有螺丝孔的端面朝左并锁紧把手螺丝(19)。

圆形把手：如产品配有把手接头(23)，则将其装至芯轴杆。将O型圈(22)装至转换把手(21)底部，如图示安装转换把手(21)，使其手柄或指示标识朝右，旋转把手直至其贴紧台面。

For square handle: Install escutcheon(13) and set to correct direction. Thread handle connector(20) to tighten escutcheon(13) against to desk. Rotate the handle connector(20) to end counter-clockwise. Install handle(18) as shown to let the screw side towards left and thread set screw(19) to tighten the handle(18).

For round handle: Insert handle connector(23) to cartridge stem if it was included in product. Insert o-ring(22) to bottom of handle hub(21). Install handle assembly as shown to let the stick or indicator towards right and rotate the handle hub(21) until it is against the desk.

6

Shower Hose Installation 花洒软管安装

将花洒软管(24)的六角螺母拧至安装导向管(25)。向上取出导向管座(26)并将其分开两半。将花洒软管(24)向下塞入导向座(27)直至六角螺母被完全塞至花洒支座(27)内。重新将两导向管座(26)在花洒软管(24)管体处拼接并压至花洒支座(27)。

Thread hex nut of shower hose(24) to lead hose(25). Pull out shower guide hubs(26) and separate to two halves. Push shower hose(24) down until the hex nut goes inside the shower holder(27). Re-put the two guide hubs(26) together around the shower hose(24) and push to the shower holder(27).

7

Handheld Shower Installation 手持花洒安装

For Square Escutcheon

方形装饰罩

For Round Handle

圆形把手

方形装饰罩：如产品中配有螺母(31)则将其拧至花洒支座(27)。将装饰罩(30)穿过花洒软管(24)，压至台面，拧紧螺丝(29)。将手持花洒(28)连至花洒软管(29)。

圆形装饰罩：将装饰罩(30)穿过花洒软管(24)，压至台面，拧紧螺丝(29)。将手持花洒(28)连至花洒软管(29)。

For square escutcheon: Thread the nut (31) to shank assembly if the nut(31) was included in product. Guide escutcheon(30)through shower hose(24) until it was against to desk. Thread screw(29) to tighten escutcheon(30). Connect shower (28) to shower hose(29).

For round escutcheon: Guide escutcheon(32) through shower hose(24) until it against to desk. Connect shower (28) to shower hose(29).

产品售后保修条款

摩恩产品是在高质量标准及生产工艺下制造的，摩恩承诺为消费者购买的洁具产品提供有期限免费保修及终身维修服务。

龙头免费保修期为：阀芯5年，电磁阀感应器2年，其它附件如淋浴杆、软管、花洒、落水、把手、装饰盖、提拉杆、混水器等保修期均为1年有限。均自消费者购买日（以摩恩产品分销商开具的发票或收据上载明日期为准）起计。

免费保修范围为产品及产品配件（如淋浴杆、软管、花洒、落水、把手、装饰盖、提拉杆、混水器等）由于材质及工艺原因而造成的故障或损坏。免费保修期内，我们将无偿为您提供修理服务及更换发生故障的产品或产品配件。摩恩的售后服务责任仅限于对故障产品的修理，而不延及您因产品故障而发生的其他损失，法律另有规定的除外。

您需了解：产品外观碰伤、刻划痕迹，以及滥用及不正当保养所导致的故障或损坏，均不属于免费保修范围。即使在免费保修期内，属下列（1）-（5）情况之一的，需酌情收取修理费用：

1. 不能出示相符的保修卡和有效购买凭证情况的，
2. 未按使用说明书告知的使用方法和注意事项造成的故障，
3. 自行拆卸、维修、改装所造成的故障和损坏，
4. 由于不可抗力等外部原因引起的故障和损坏，
5. 由于运输、搬卸、挤压等造成的损坏。

对于保修期外或不在保修范围内的产品，如需维修，摩恩将酌情收取上门费、人工费及材料费。

本保修条款仅对原始消费者和酒店行业的购买者有效，并不适用于本产品工业、商业、贸易和非酒店行业的使用。

如对本保修条款内容有任何疑问，请拨打400 630 8866 咨询热线，或向当地分销商咨询。

MOEN LIMITED WARRANTY

We offer limited warranty and lifetime maintenance for Moen products, which are all manufactured with high standards of workmanship.

The period of warranty shall start from the date of purchase of the product (according to the invoice or receipt issued by Moen distributors) and shall cover a period of the following: the warranty period for cartridge is 5 years, the warranty period for solenoid valve sensor is 2 years, the warranty period of other accessories such as shower bar, hose, shower, drain assembly, handle, cover, lift rod, aerator etc. is 1 year.

This warranty is your coverage against material and workmanship malfunction or defects in Moen products or components (such as shower bar, hose, shower, drain assembly, handle, cover, lift rod, aerator etc.). During the warranty period, we offer free maintenance and changing of malfunctioned products or product components. Moen's after sales service liability is limited to the maintenance of faulty items and does not cover your other losses caused by product malfunction, except for otherwise stipulated by law.

Cosmetic damages (scratches, dents, etc.) and malfunction or defects caused by abuse or improper maintenance is not covered by this warranty. Although the warranty period remains valid, in case of the following conditions (1) - (5), the maintenance cost (material cost and labor cost) shall still be charged as the case may be:

1. Corresponding warranty card and valid invoice cannot be presented;
2. Faults were caused by the incompliance with the instructions and precautions provided in the user's manual;
3. Damages and faults were caused by self-actuated dismantling, repair and refit;
4. Faults and damages were caused by external factors such as force majeure;
5. Damages were caused by transportation, unloading and extrusion, etc.

This warranty is valid for the original consumers only (including hotel use), and excludes industrial and commercial use of the product (except for hotel use). This card is only responsible for product maintenance rather than any other liabilities.

In the event that the product requires maintenance but exceeds the warranty period, or that the product is not covered by this warranty, labor cost and material cost shall be charged as the case may be.

Please call 400-630-8866 or contact local dealer for any question.

MOEN® 摩恩

合格证
Compliance Certification

产品名称
Product Name

罗马浴缸龙头水嘴把手组件
Trim for Roman
Tub Shower Faucet

检验员
Inspector

生产日期
Date of Production

富俊汇赢科技（上海）有限公司
中国（上海）自由贸易试验区新杨公路
1800弄1号4幢207室
邮编：201413

Fortune Brands Innovations (Shanghai) Co., Ltd
Room 207, Building 4, No. 1, Lane 1800, Xinyang Highway,
China (Shanghai) Pilot Free Trade Zone