



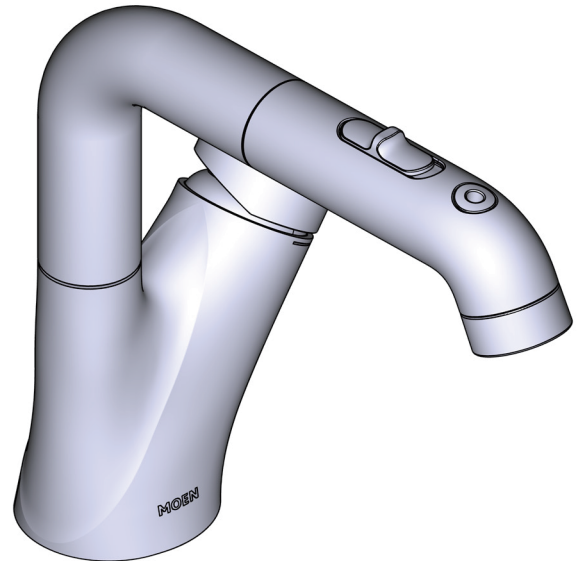


安装说明书

INSTALLATION INSTRUCTIONS

 <p>护目镜 Safety Glasses</p>	 <p>活动扳手 Adjustable Wrench</p>	 <p>十字螺丝刀 Cross Screwdriver</p>	 <p>剪线钳 Wire Cutters</p>
---	---	--	---



Record Purchased Model Number:
(Save instruction sheet for future reference)

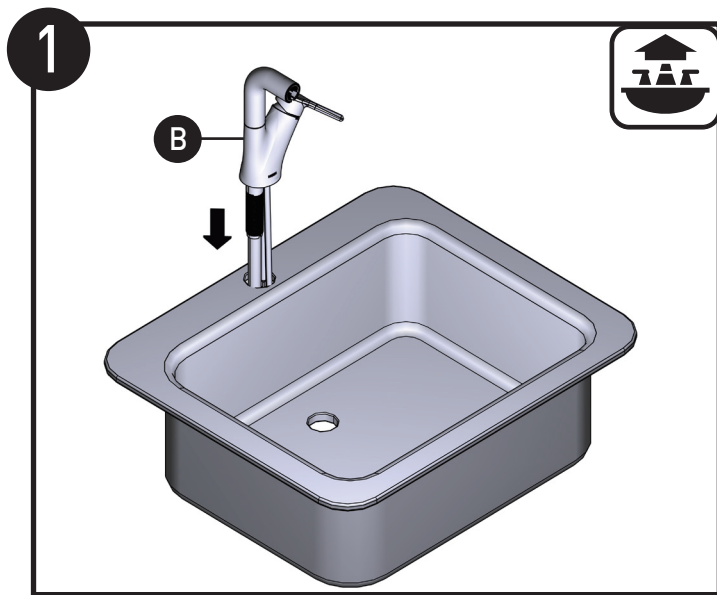


- ## Parts List

- 水槽下方
Below sink

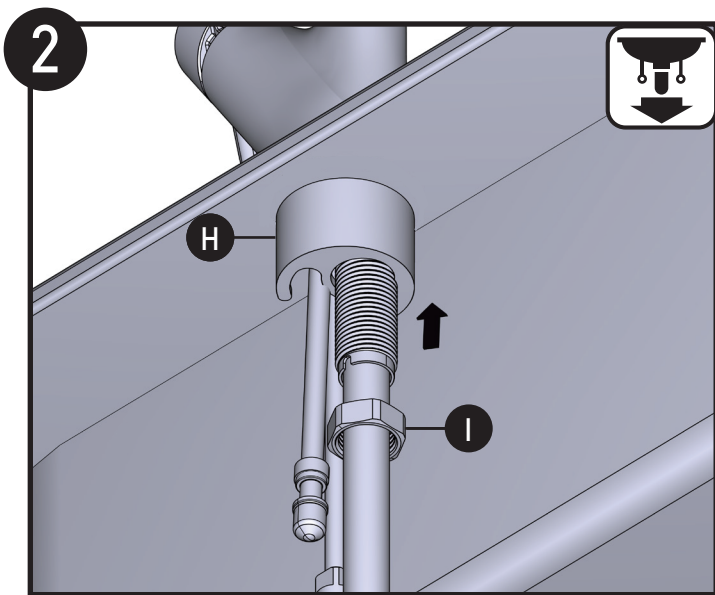
注意：以下安装步骤将以功能性喷嘴为例。

NOTE: The following installation step will be used as an example of function spray wand.



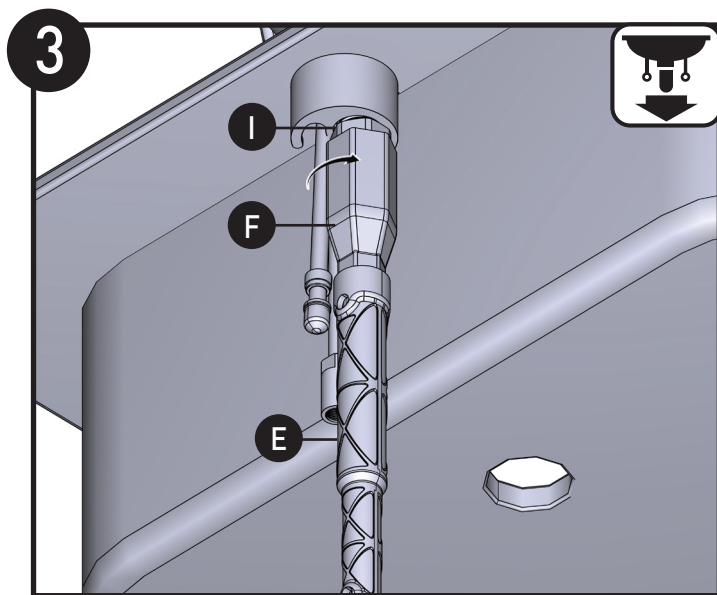
将水龙头主体 (B) 装入安装孔。

Install Faucet Body (B) into opening.



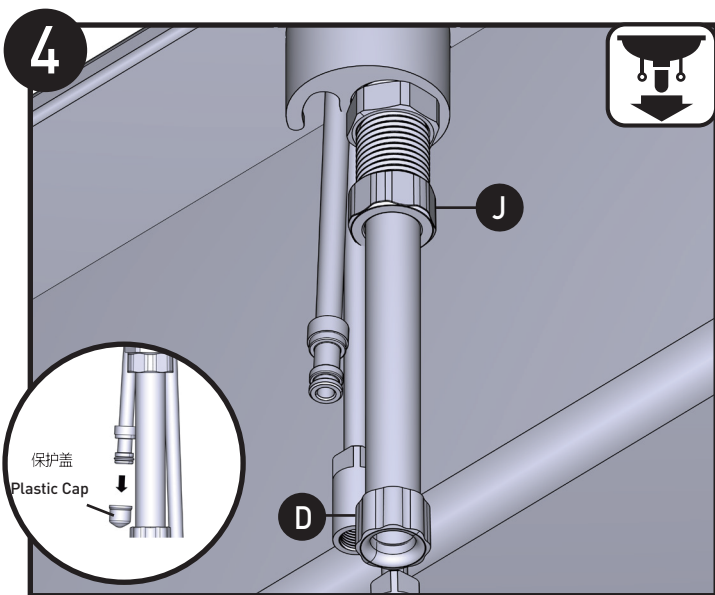
将橡胶安装垫片 (H) 按如图所示的顺序安装到水龙头主体 (B) 上，并用安装螺母 (I) 固定。

Install Mounting Gasket (H) onto Faucet Body (B) as shown. Secure Rubber Gasket (G) and Mounting Gasket (H) with Mounting Nut (I).



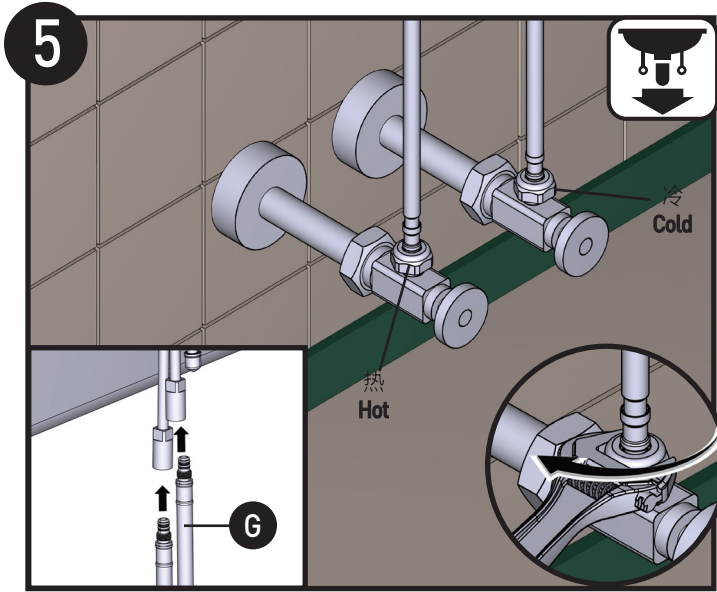
用安装扳手 (F) 和套筒扳手 (E) 将安装螺母 (I) 拧紧。

Tighten the Mounting Nut (I) with Wrench (F) and Mounting Tool (E).



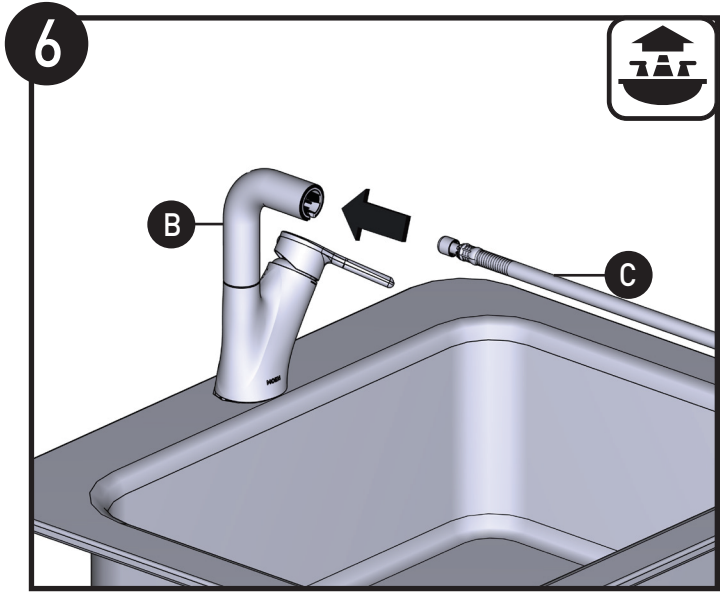
如图所示，将防撞螺母 (J) 和 (D) 拧到安装杆的末端，用手拧紧。将出水管的保护盖拆下。

Thread the Hose Protector (J) and (D) on to the end of shank as shown, tighten manually. Remove the plastic cap of the faucet outlet pipe.



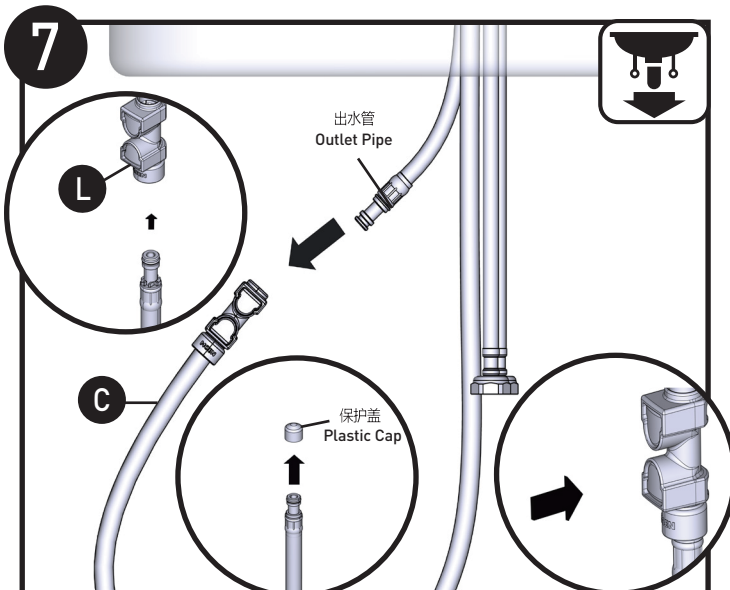
将水龙头冷热水(G)管分别正确地连接到冷热进水口。

Check that hot & cold supply hoses (G) are connected correctly to hot & cold supplies.



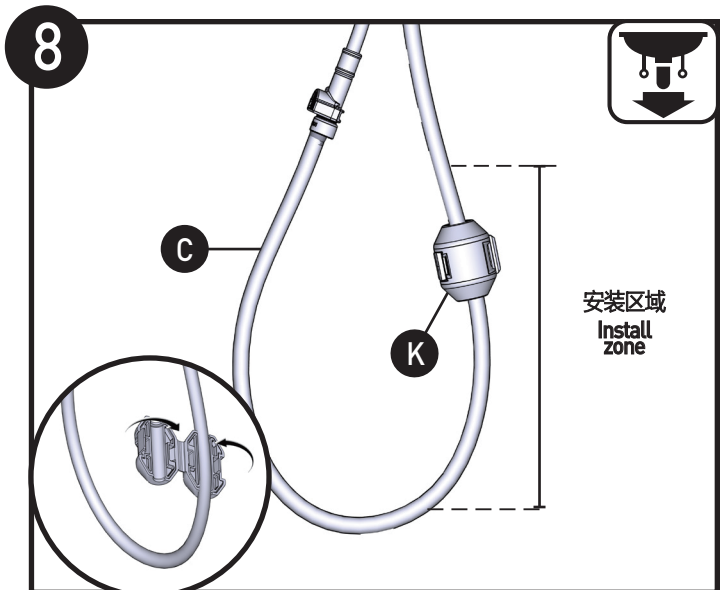
将抽拉软管 (C) 从水龙头主体 (B) 插入安装。注意：安装时请勿先取下抽拉软管 (C) 的保护盖。

Insert Pullout Hose (C) into opening and feed through Faucet Body (B) until wand is docked. NOTE: Do not remove the Plastic Cap of Pullout Hose (C) first during installation.



拔掉抽拉软管 (C) 的保护盖。用快速接头 (L) 连接抽拉软管 (C) 与龙头出水管。尽可能往内推，直到听到“咔嚓”声。向下拉测试安装是否牢固。注意：如果想拆下抽拉软管 (C) 可按下开关同时向下拉。

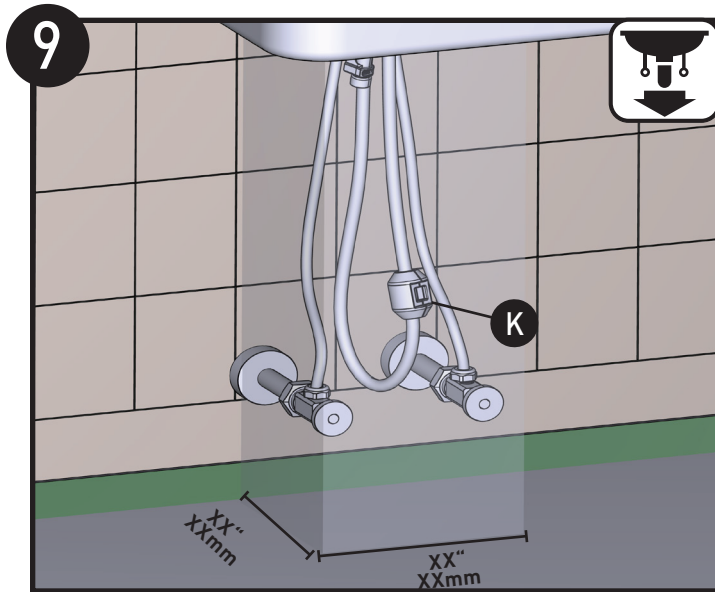
Remove and discard plastic cap from end of Pullout Hose (C). Connect the Pullout Hose (C) and the faucet outlet pipe with Quick Connector (L). Push in as far as possible until a "click" is heard. Tug downward to test engagement. NOTE: To release the installation, you can press the switch and pull down at the same time.



将配重块 (K) 打开，扣在抽拉软管 (C) 上。

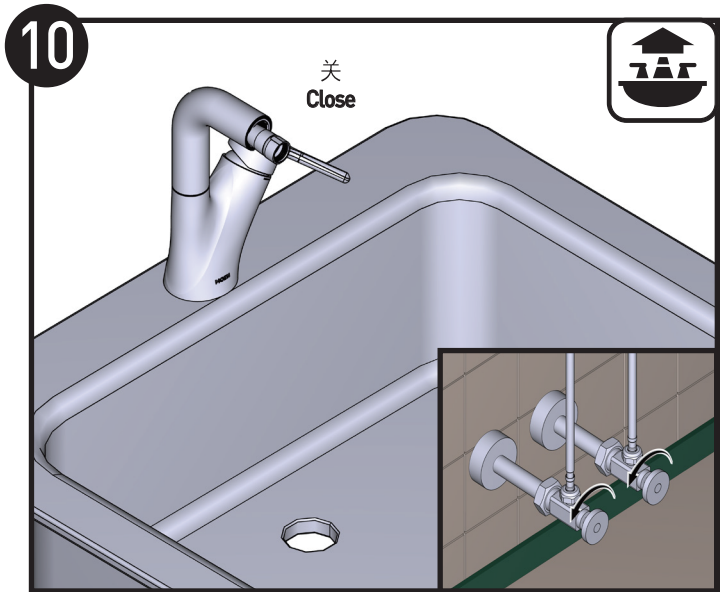
注意：安装配重块的时候请调整并保证抽拉功能操作顺畅。

Install Hose Weight (K) between bottom of loop curvature and white tape of Pullout Hose (C). NOTE: The installation of Hose Weight must ensure that the pull-out function works well.



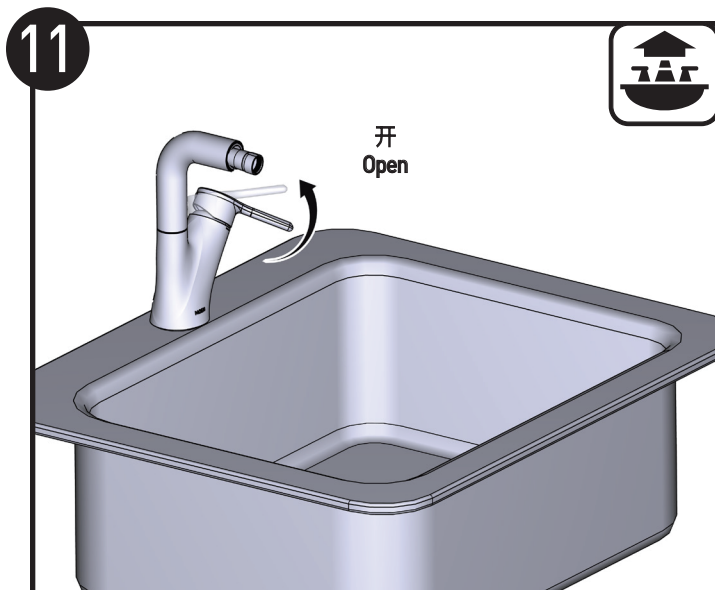
为保障您的新抽拉式水龙头处于最佳状态，摩恩建议如下：保留203mm*203mm的空间以保证软管和配重块的滑动顺畅。

For the best performance of your new pullout faucet, Moen recommends keeping 203*203mm clear area for Pullout Hose and Hose Weight to travel, without any obstruction.



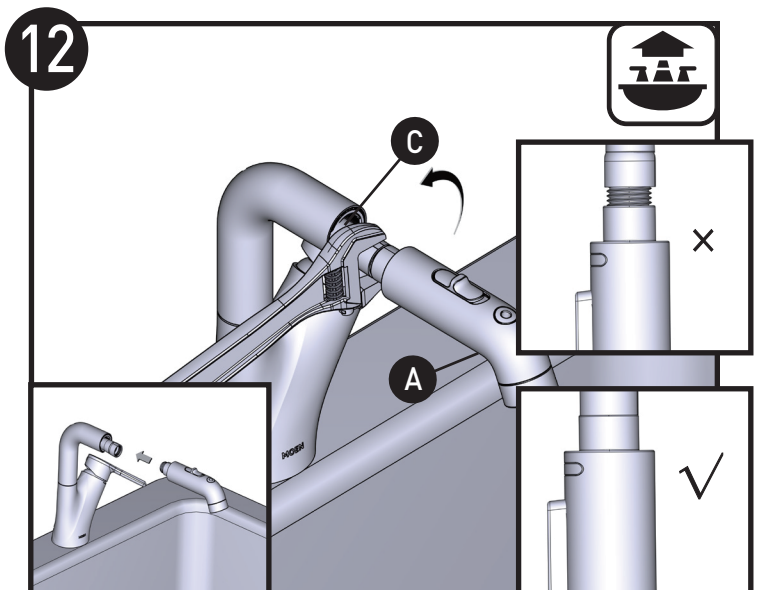
将水龙头调整至关闭状态，打开冷热水管的开关。

Adjust the faucet to off and turn on the hot & cold water supplies.



打开水龙头开关测试出水是否正常。

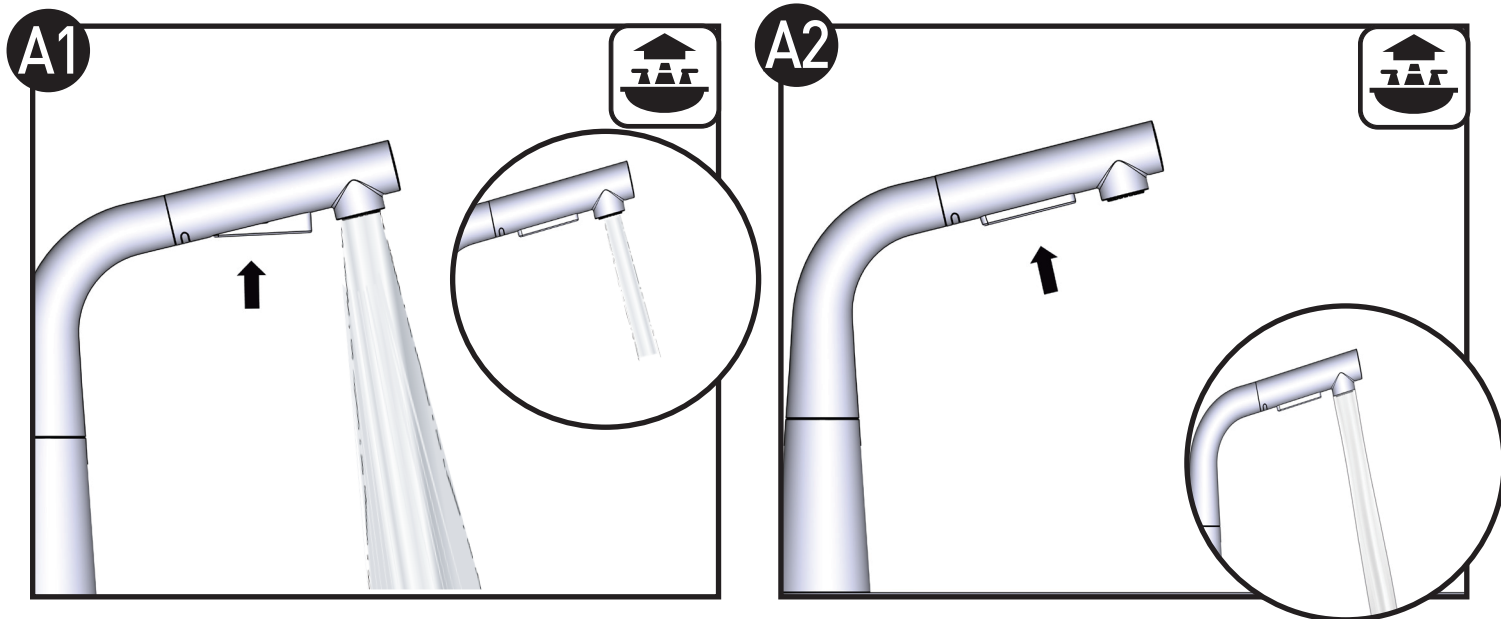
Turn on the faucet switch to test whether the effluent is normal.



先用手连接并拧紧喷嘴（A）与抽拉软管（C），如果没有达到安装效果，可用活动扳手锁紧。注意：不需过于用力，以防损坏喷嘴。

Thread Pullout Hose [C] onto Spray Wand [A] and tighten manually. If necessary, tighten by an adjustable wrench. **NOTE: Do not overtighten.**

普通喷嘴功能 Irregular Flow



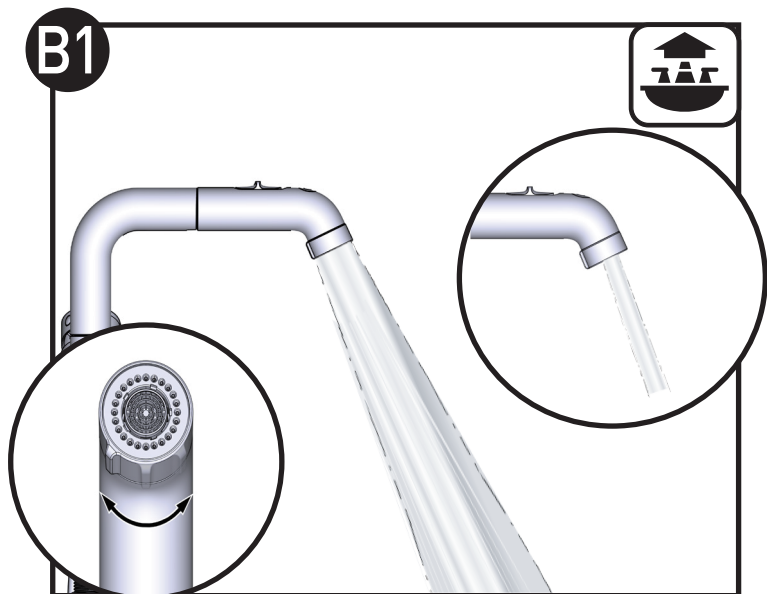
按下开关切换水流型态。

Press the switch to change the flow pattern.

按下开关暂停水流。

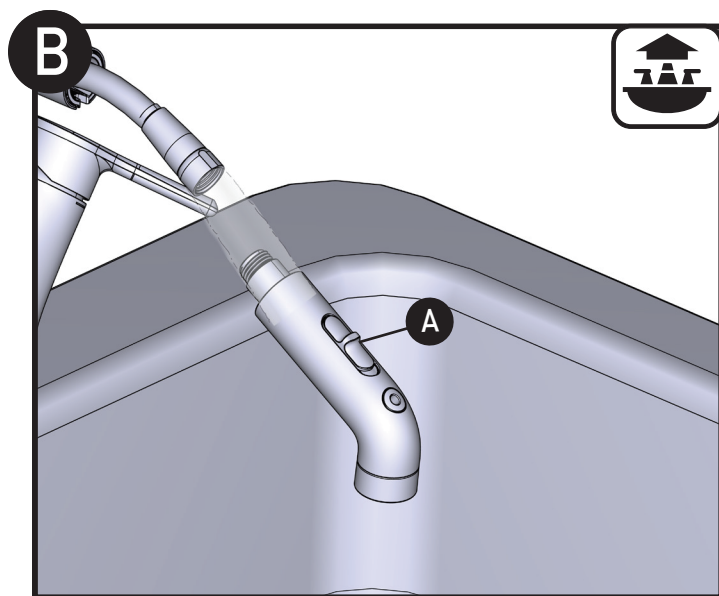
Press the switch to pause the water.

功能性喷嘴功能 Irregular Flow



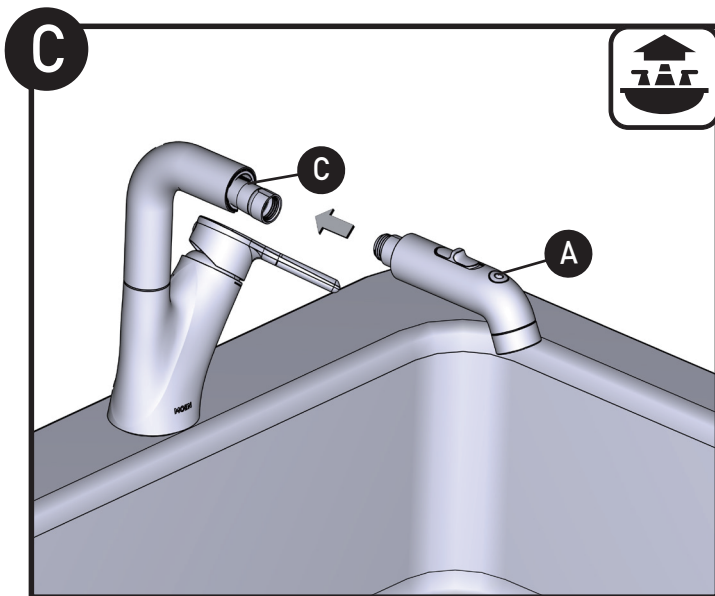
旋转开关切换水流型态。

Turn the switch to change the flow pattern.



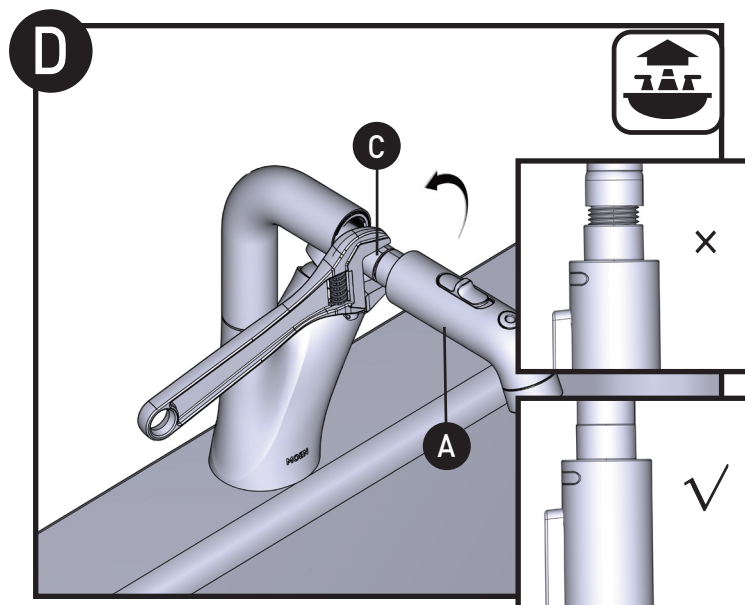
用水冲洗喷嘴 (A), 清洗至无可见碎屑等堵塞物。关闭开关后, 重新安装喷嘴 (A)。

Clean Spray Wand (A) as shown to remove any possible debris. Turn off water and reinstall Spray Wand (A).



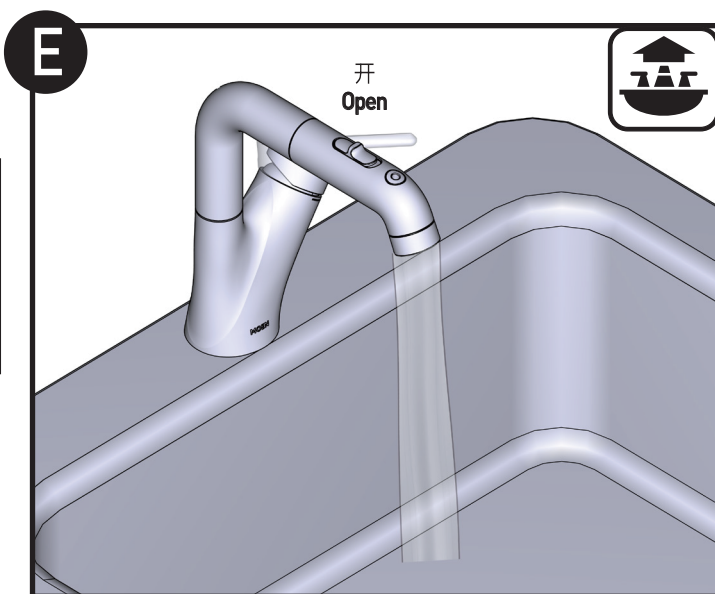
将喷嘴 (A) 和抽拉软管 (C) 重新连接。

Thread Pullout Hose (C) onto Spray Wand (A) again.



重新用手连接并拧紧喷嘴 (A) 与抽拉软管 (C), 如果没有达到安装效果, 可用活动扳手锁紧。注意: 不需过于用力, 以防损坏喷嘴。

Thread Pullout Hose (C) onto Spray Wand (A) and tighten manually. If necessary, tighten by an adjustable wrench. NOTE: Do not overtighten.



打开开关, 水流恢复正常。如果没有恢复请重复步骤A到D。

Turn on the faucet to see if the flow has improved. Repeat steps A through D if necessary.

产品售后保修条款

摩恩产品是在高质量标准及生产工艺下制造的，摩恩承诺为消费者购买的洁具产品提供有期限免费保修及终身维修服务。

龙头免费保修期为：阀芯5年，电磁阀感应器2年，其它附件如淋浴杆、软管、花洒、落水、把手、装饰盖、提拉杆、混水器等保修期均为1年有限。均自消费者购买日（以摩恩产品分销商开具的发票或收据上载明日期为准）起计。

免费保修范围为产品及产品配件（如淋浴杆、软管、花洒、落水、把手、装饰盖、提拉杆、混水器等）由于材质及工艺原因而造成的故障或损坏。免费保修期内，我们将无偿为您提供维修服务及更换发生故障的产品或产品配件。摩恩的售后服务责任仅限于对故障产品的修理，而不延及您因产品故障而发生的其他损失，法律另有规定的除外。

您需了解：产品外观碰伤、刻划痕迹，以及滥用及不正当保养所导致的故障或损坏，均不属于免费保修范围。即使在免费保修期内，属下列（1）-（5）情况之一的，需酌情收取修理费用：

1. 不能出示相符的保修卡和有效购买凭证情况的，
2. 未按使用说明书告知的使用方法和注意事项造成的故障，
3. 自行拆卸、维修、改装所造成的故障和损坏，
4. 由于不可抗力等外部原因引起的故障和损坏，
5. 由于运输、搬运、挤压等造成的损坏。

对于保修期外或不在保修范围内的产品，如需维修，摩恩将酌情收取上门费、人工费及材料费。

本保修条款仅对原始消费者和酒店行业的购买者有效，并不适用于本产品工业，商业，贸易和非酒店行业的使用。

如对本保修条款内容有任何疑问，请拨打400 630 8866 咨询热线，或向当地分销商咨询。

MOEN LIMITED WARRANTY

We offer limited warranty and lifetime maintenance for Moen products, which are all manufactured with high standards of workmanship.

The period of warranty shall start from the date of purchase of the product (according to the invoice or receipt issued by Moen distributors) and shall cover a period of the following: the warranty period for cartridge is 5 years, the warranty period for solenoid valve sensor is 2 years, the warranty period of other accessories such as shower bar, hose, shower, drain assembly, handle, cover, lift rod, aerator etc. is 1 year.

This warranty is your coverage against material and workmanship malfunction or defects in Moen products or components (such as shower bar, hose, shower, drain assembly, handle, cover, lift rod, aerator etc.). During the warranty period, we offer free maintenance and changing of malfunctioned products or product components. Moen's after sales service

liability is limited to the maintenance of faulty items and does not cover your other losses caused by product malfunction, except for otherwise stipulated by law. Cosmetic damages (scratches, dents, etc.) and malfunction or defects caused by abuse or improper maintenance is not covered by this warranty. Although the warranty period remains valid, in case of the following conditions (1) - (5), the maintenance cost (material cost and labor cost) shall still be charged as the case may be:

1. Corresponding warranty card and valid invoice cannot be presented;
2. Faults were caused by the incompliance with the instructions and precautions provided in the user's manual;
3. Damages and faults were caused by self-actuated dismantling, repair and refit;
4. Faults and damages were caused by external factors such as force majeure;
5. Damages were caused by transportation, unloading and extrusion, etc.

This warranty is valid for the original consumers only (including hotel use), and excludes industrial and commercial use of the product (except for hotel use). This card is only responsible for product maintenance rather than any other liabilities.

In the event that the product requires maintenance but exceeds the warranty period, or that the product is not covered by this warranty, labor cost and material cost shall be charged as the case may be.

Please call 400-630-8866 or contact local dealer for any question.

MOEN® 摩恩

合格证 Compliance Certification

产品名称 单把手抽取式面盆龙头
Product Name One-Handle Pullout Lavatory Faucet

检验员
Inspector

生产日期
Date of Production

富俊汇赢科技（上海）有限公司
中国（上海）自由贸易试验区新杨公路
1800弄1号4幢207室
邮编：201413

Fortune Brands Innovations (Shanghai) Co., Ltd
Room 207, Building 4, No.1, Lane 1800, Xinyang Highway,
China (Shanghai) Pilot Free Trade Zone