

MOEN® 摩恩

浴室柜组合

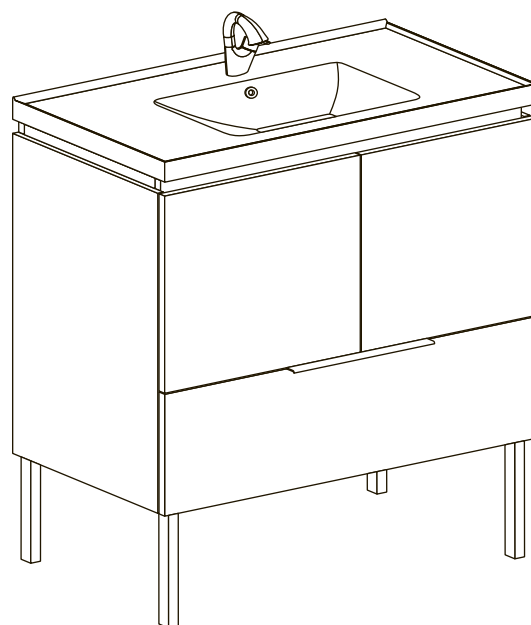
帕罗系列

安装使用说明书

Bathroom Cabinet Set

PALO Series

INSTALLATION INSTRUCTIONS



如需安装支持, 配件丢失等, 请联系MOEN。
(中国) 400-630-8866
www.moen.cn

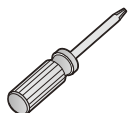
PLEASE CONTACT MOEN FIRST
For Installation Help, Missing or Replacement
Parts
(China) 400-630-8866
www.moen.cn

推荐工具

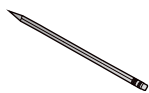
为了安全和让安装和替换变得容易, Moen建议您使用以下工具:

HELPFUL TOOLS

For safety and ease of replacement, Moen recommends the use of these helpful tools.



螺丝刀
Screwdriver



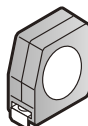
铅笔
Pencil



手枪钻
Pistol Drill



护目镜
Safety Glasses



卷尺
Tape Measure



水平尺
Spirit Level

图片仅供参考
(款式因型号而异)

Image is for reference only
(Style varies by model)

记录购买的型号:
(保存安装说明书以备将来参考)

Record Purchased Model Number:
(Save instruction sheet for future reference)

安装前注意事项

- 请仔细阅读本说明书，以便熟悉所需工具、物料、安装过程。请按照适用的章节来安装本产品，以免安装失当导致不必要的损失。除了正确的安装方法之外，请详阅所有操作及安全指引。
- 本说明书所载的一切资料，均以印刷时所有之最新产品情况为基础，MOEN保留对产品进行修改、改进的权力，技术参数如有更改，恕不另行通知。
- 在安装MOEN产品之前，请先确认所有必须的电气工作均已完成。并确认遵循制造商相关电动工具的安全的指令。
- 强烈建议在柜体安装前拆下抽屉，门和活动层板，使安装过程安全，具体步骤参考后续指导。
- 关闭供水。
- 管道安装必须遵循当地所有给排水、建筑或者其他的特别规定。管道安装人员必须具备相应资格。
- 安装之前，仔细检查产品是否有损伤。
- MOEN产品性能卓越，经久耐用。为保证产品品质，请按照此说明书中推荐的方法进行安装，启用，操作和维护。

Precautions Before Installation

- Please read this manual carefully to familiarize yourself with the required tools, materials, and installation process. Please install this product in accordance with the applicable chapters to avoid unnecessary losses due to improper installation. In addition to the correct installation method, please read all operation and safety guidelines.
- All information contained in this manual is based on all the latest product conditions at the time of printing. MOEN reserves the right to modify and improve the product. Technical parameters are subject to change without notice.
- Before installing MOEN products, please confirm that all necessary electrical work has been completed. And confirm to follow the manufacturer's safety instructions related to power tools.
- It is strongly recommended to remove the drawers, doors and movable shelves before installing the cabinet to make the installation process safe. Refer to the follow-up instructions for specific steps.
- Shut off the water supply.
- Piping installation must comply with all local water supply and drainage, construction or other special regulations. The pipe installer must have the appropriate qualifications.
- Before installation, carefully check the product for damage.
- MOEN products are excellent in performance and durable. In order to ensure product quality, please follow the methods recommended in this manual for installation, activation, operation and maintenance.

订购信息 Ordering Information

BC3105-102WH 750mm浴室柜组合 (极地白) (单孔) =BC3101-002WH+BC3104-102 • BC3101-002WH 750mm柜体 (极地白) • BC3104-102 750mm人造石一体盆 (单孔)	BC3105-102WH 750mm Cabinet Set (Polar White) (Single Hole) =BC3101-002WH+BC3104-102 • BC3101-002WH 750mm Base Cabinet (Polar White) • BC3104-102 750mm Integrated Basin (Single Hole)
BC3105-802WH 750mm浴室柜组合 (极地白) (八寸孔) =BC3101-002WH+BC3104-802 • BC3101-002WH 750mm柜体 (极地白) • BC3104-802 750mm人造石一体盆 (八寸孔)	BC3105-802WH 750mm Cabinet Set (Polar White) (8" hole) =BC3101-002WH+BC3104-802 • BC3101-002WH 750mm Base Cabinet (Polar White) • BC3104-802 750mm Integrated Basin (8" Hole)
BC3105-102WD 750mm浴室柜组合 (胡桃木色) (单孔) =BC3101-002WD+BC3104-102 • BC3101-002WD 750mm柜体 (胡桃木色) • BC3104-102 750mm人造石一体盆 (单孔)	BC3105-102WD 750mm Cabinet Set (Walnut) (Single Hole) =BC3101-002WD+BC3104-102 • BC3101-002WD 750mm Base Cabinet (Walnut) • BC3104-102 750mm Integrated Basin (Single Hole)
BC3105-802WD 750mm浴室柜组合 (胡桃木色) (八寸孔) =BC3101-002WD+BC3104-802 • BC3101-002WD 750mm柜体 (胡桃木色) • BC3104-802 750mm人造石一体盆 (八寸孔)	BC3105-802WD 750mm Cabinet Set (Walnut) (8" hole) =BC3101-002WD+BC3104-802 • BC3101-002WD 750mm Base Cabinet (Walnut) • BC3104-802 750mm Integrated Basin (8" Hole)
BC3105-102GY 750mm浴室柜组合 (水云石) (单孔) =BC3101-002GY+BC3104-102 • BC3101-002GY 750mm柜体 (水云石) • BC3104-102 750mm人造石一体盆 (单孔)	BC3105-102GY 750mm Cabinet Set (Stone Grey) (Single Hole) =BC3101-002GY+BC3104-102 • BC3101-002GY 750mm Base Cabinet (Stone Grey) • BC3104-102 750mm Integrated Basin (Single Hole)



BC3105-802GY 750mm浴室柜组合 (水云石) (八寸孔) =BC3101-002GY+BC3104-802 <ul style="list-style-type: none">• BC3101-002GY 750mm柜体 (水云石)• BC3104-802 750mm人造石一体盆 (八寸孔)	BC3105-802GY 750mm Cabinet Set (Stone Grey) (8" Hole) =BC3101-002GY+BC3104-802 <ul style="list-style-type: none">• BC3101-002GY 750mm Base Cabinet (Stone Grey)• BC3104-802 750mm Integrated Basin (8" Hole)
BC3105-102WK 750mm浴室柜组合 (白橡木) (单孔) =BC3101-002WK+BC3104-102 <ul style="list-style-type: none">• BC3101-002WK 750mm柜体 (白橡木)• BC3104-102 750mm人造石一体盆 (单孔)	BC3105-102WK 750mm Cabinet Set (White Oak) (Single Hole) =BC3101-002WK+BC3104-102 <ul style="list-style-type: none">• BC3101-002WK 750mm Base Cabinet (White Oak)• BC3104-102 750mm Integrated Basin (Single Hole)
BC3105-802WK 750mm浴室柜组合 (白橡木) (八寸孔) =BC3101-002WK+BC3104-802 <ul style="list-style-type: none">• BC3101-002WK 750mm柜体 (白橡木)• BC3104-802 750mm浴室柜组合 (白橡木) (八寸孔)	BC3104-802 750mm Cabinet Set (White Oak) (8" Hole) =BC3101-002WK+BC3104-802 <ul style="list-style-type: none">• BC3101-002WK 750mm Base Cabinet (White Oak)• BC3104-802 750mm Integrated Basin (8" Hole)
BC3105-101WH 900mm浴室柜组合 (极地白) (单孔) =BC3101-001WH+BC3104-101 <ul style="list-style-type: none">• BC3101-001WH 900mm柜体 (极地白)• BC3104-101 900mm人造石一体盆 (单孔)	BC3105-101WH 900mm Cabinet Set (Polar White) (Single Hole) =BC3101-001WH+BC3104-101 <ul style="list-style-type: none">• BC3101-001WH 900mm Base Cabinet (Polar White)• BC3104-101 900mm Integrated Basin (Single Hole)
BC3105-801WH 900mm浴室柜组合 (极地白) (八寸孔) =BC3101-001WH+BC3104-801 <ul style="list-style-type: none">• BC3101-001WH 900mm柜体 (极地白)• BC3104-801 900mm人造石一体盆 (八寸孔)	BC3105-801WH 900mm Cabinet Set (Polar White) (8" Hole) =BC3101-001WH+BC3104-801 <ul style="list-style-type: none">• BC3101-001WH 900mm Base Cabinet (Polar White)• BC3104-801 900mm Integrated Basin (8" Hole)
BC3105-101WD 900mm浴室柜组合 (胡桃木色) (单孔) =BC3101-001WD+BC3104-101 <ul style="list-style-type: none">• BC3101-001WD 900mm柜体 (胡桃木色)• BC3104-101 900mm人造石一体盆 (单孔)	BC3105-101WD 900mm Cabinet Set (Walnut) (Single Hole) =BC3101-001WD+BC3104-101 <ul style="list-style-type: none">• BC3101-001WD 900mm Base Cabinet (Walnut)• BC3104-101 900mm Integrated Basin (Single Hole)
BC3105-801WD 900mm浴室柜组合 (胡桃木色) (八寸孔) =BC3101-001WD+BC3104-801 <ul style="list-style-type: none">• BC3101-001WD 900mm柜体 (胡桃木色)• BC3104-801 900mm人造石一体盆 (八寸孔)	BC3105-801WD 900mm Cabinet Set (Walnut) (8" Hole) =BC3101-001WD+BC3104-801 <ul style="list-style-type: none">• BC3101-001WD 900mm Base Cabinet (Walnut)• BC3104-801 900mm Integrated Basin (8" Hole)
BC3105-101GY 900mm浴室柜组合 (水云石) (单孔) =BC3101-001GY+BC3104-101 <ul style="list-style-type: none">• BC3101-001GY 900mm柜体 (水云石)• BC3104-101 900mm人造石一体盆 (单孔)	BC3105-101GY 900mm Cabinet Set (Stone Grey) (Single Hole) =BC3101-001GY+BC3104-101 <ul style="list-style-type: none">• BC3101-001GY 900mm Base Cabinet (Stone Grey)• BC3104-101 900mm Integrated Basin (Single Hole)
BC3105-801GY 900mm浴室柜组合 (水云石) (八寸孔) =BC3101-001GY+BC3104-801 <ul style="list-style-type: none">• BC3101-001GY 900mm柜体 (水云石)• BC3104-801 900mm人造石一体盆 (八寸孔)	BC3105-801GY 900mm cabinet set (stone grey) (8" hole) =BC3101-001GY+BC3104-801 <ul style="list-style-type: none">• BC3101-001GY 900mm base cabinet (stone grey)• BC3104-801 900mm integrated basin (8" hole)
BC3105-101WK 900mm浴室柜组合 (白橡木) (单孔) =BC3101-001WK+BC3104-101 <ul style="list-style-type: none">• BC3101-001WK 900mm柜体 (白橡木)• BC3104-101 900mm人造石一体盆 (单孔)	BC3105-101WK 900mm Cabinet Set (White Oak) (Single Hole) =BC3101-001WK+BC3104-101 <ul style="list-style-type: none">• BC3101-001WK 900mm Base Cabinet (White Oak)• BC3104-101 900mm Integrated Basin (Single Hole)
BC3105-801WK 900mm浴室柜组合 (白橡木) (八寸孔) =BC3101-001WK+BC3104-801 <ul style="list-style-type: none">• BC3101-001WK 900mm柜体 (白橡木)• BC3104-801 900mm人造石一体盆 (八寸孔)	BC3105-801WK 900mm Cabinet Set (White Oak) (8" Hole) =BC3101-001WK+BC3104-801 <ul style="list-style-type: none">• BC3101-001WK 900mm Base Cabinet (White Oak)• BC3104-801 900mm Integrated Basin (8" Hole)

产品尺寸 Rough-in Dimension

单位 Unit: mm

产品名称 Product Name	参考值 (L*W*H) Reference Value	组合柜示意图 Cabinet Set Diagram
750mm 浴室柜组合 Cabinet Set	<ul style="list-style-type: none"> 组合柜 Cabinet Set: 750x500x675 盆 Basin: 750x500x210 柜体 Cabinet Body: 744x495x630 	
900mm 浴室柜组合 Cabinet Set	<ul style="list-style-type: none"> 组合柜 Cabinet Set: 900x500x675 盆 Basin: 900x500x210 柜体 Cabinet Body: 894x495x630 	

注：摩恩公司保留随时变更图中尺寸的权利，无需另行通知。

Note: MOEN reserves the right to change marked dimensions without prior notice.

浴室柜安装

一、准备墙面

- 根据脸盆的尺寸图信息安装进水管和排水管。水管接头必须至少超出墙面76 mm。
- 确保完工墙面水平和垂直方向的平直，确保与墙面垂直的地面水平。

注：安装之前，请确认在墙面需要固定挂柜的位置，是否为实心混凝土砖或者有不适宜固定挂柜的情况；在墙体使用空心砖的情况下，请确认处理后的墙体可以解决挂重问题，使膨胀螺栓能够牢固地固定在基层墙体上。

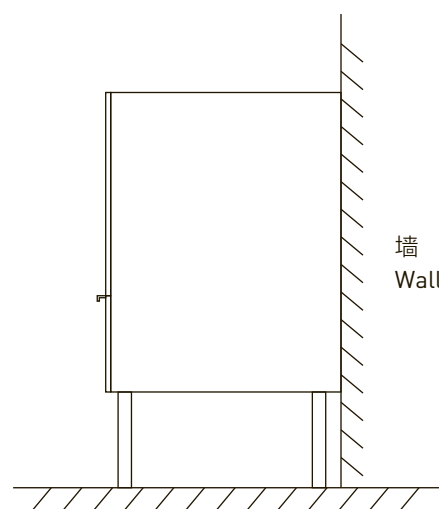
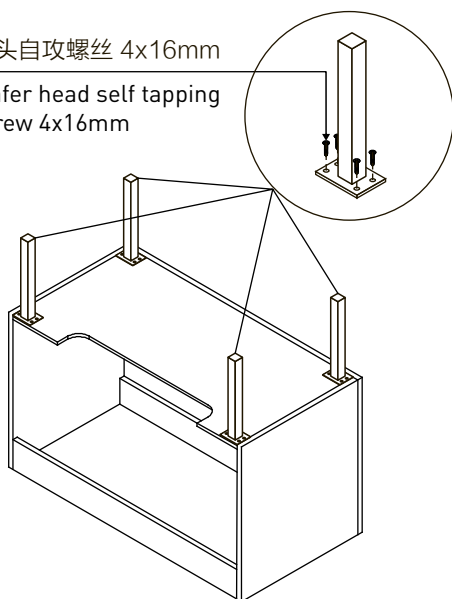
二、安装柜体

安装前注意事项：请确保所有活动部件，抽屉等均已从柜体移除。请参考本说明书中“抽屉的拆卸、安装和调节”章节。

1. 将高度200mm的铝合金支撑脚，根据图示用螺丝固定到柜体上。然后把柜子放置在墙边，检查柜子是否水平，如果需要，可通过调节调整脚来达到水平。

⚠️ 小心！ 支撑脚安装完成后，翻转柜体的时候，要求四只脚同时着地，以防受力不均匀，以致支撑脚和柜体损坏。

平头自攻螺丝 4x16mm
Wafer head self tapping screw 4x16mm



Install Bathroom Cabinet

Prepare Wall

- Install the water inlet pipe and drain pipe according to the washbasin dimension. The water pipe connection must extend at least 76 mm beyond the wall.
- Make sure that the finished wall is horizontal and straight in the vertical direction, and ensure that the ground perpendicular to the wall is level.

Note: Before installation, please make sure that the position of the wall cabinet needs to be fixed, whether it is solid concrete brick or is not suitable for fixing the cabinet; In the case of using hollow bricks on the wall, please confirm that the treated wall can solve the problem, so that the expansion bolts can be firmly fixed on the base wall.

Install Cabinet

Notes Before Installation: Please make sure that all moving parts, drawers, etc. are removed from the cabinet. Please refer to the "Drawer Disassembly, Installation and Adjustment" in this document.

1. Fix the selected aluminum alloy support feet in 200mm height on the bottom board with screws. Place the cabinet on the wall and check whether the cabinet is level. Make the cabinet level by adjusting the feet.

⚠️ Careful! After the installation of support feet and when overturning the cabinet body, four feet must touch the ground at the same time to prevent uneven stress. Otherwise, the feet and the cabinet body may be damaged.

2. 在墙壁上标出挂膨胀螺丝的部件膨胀管的位置。

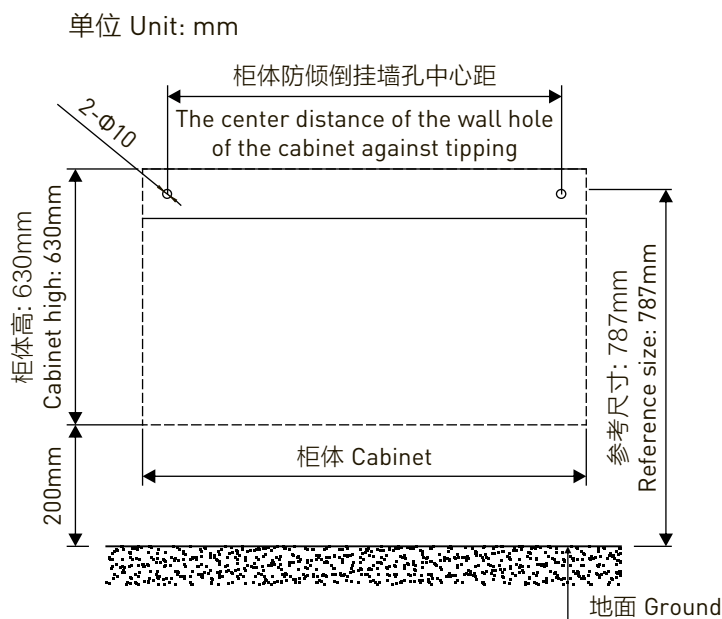
⚠️ 小心! 在墙壁上钻孔时请务必小心避开内设的缆线和管道。

注意: 不同的装饰墙面需要不同型号的膨胀螺丝, 请使用合适型号的膨胀螺丝和钻孔钻头。摩恩只提供标配的膨胀螺丝, 其他型号的膨胀螺丝需另外购买。

2. Mark the position of expansion pipe on the wall.

⚠️ Careful! When drilling holes in the wall, be sure to avoid the internal cables and pipes.

Note: Different decorative walls need different types of expansion screws. Please use the appropriate type of expansion screw and drilling bit. Moen only provides standard expansion screws. If need other types of screws, buy yourselves .

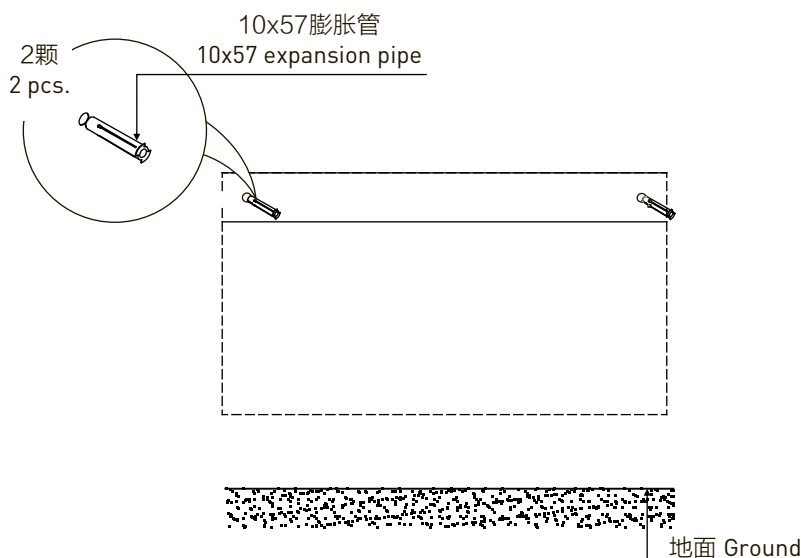


3. 钻好挂墙式膨胀螺丝的安装孔, 使用水平仪检查, 确保安装孔水平。

4. 将膨胀管敲入墙上的安装孔。

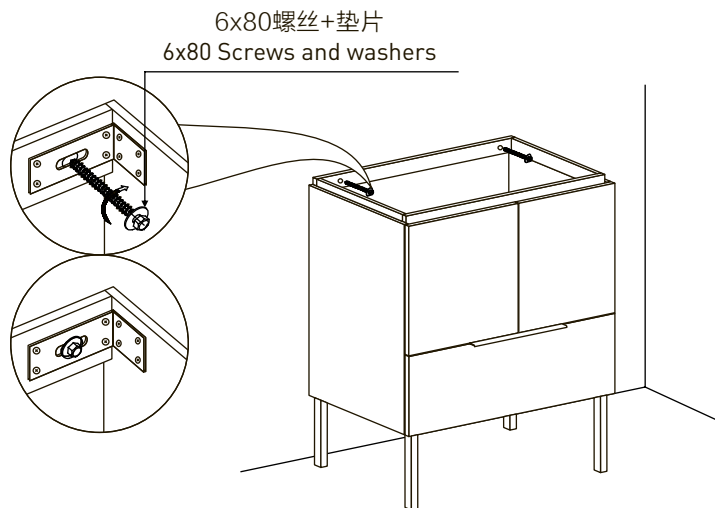
3. Make the installation hole for the wall mounted expansion screw, and ensure the installation hole is level with level meter.

4. The expansion pipe type mounting holes on the wall.



5. 将垫片套在膨胀螺丝上，然后将膨胀螺丝穿过柜体插入墙上的安装孔，拧紧膨胀螺丝，确认将浴室柜牢固固定在墙体上。

5. Gasket set on expansion screws, and then insert the screw through the cabinet put oneself in another's position the mounting holes on the wall, tighten the screw, confirm the bathroom ark firmly fixed on the wall.



三、安装台盆台面

注意：如果可能，将脸盆安装至柜体前请先将龙头安装至脸盆。

注意：安装台面轻拿轻放，避免与坚硬物品摩擦。

A. 台上盆台面

1. 将已经开好脸盆孔的台面安放到浴室柜正确的位置上，在浴室柜台面与墙体接触的部分连续均匀涂密封胶。
2. 在安装部位均匀地涂少许密封胶，然后将脸盆安放到台面上。

B. 台下盆台面

1. 将开好脸盆孔的台面正面朝下倒置在软垫上。
 2. 将脸盆用螺栓固定在台面下预置的位置。
- 注意：**请在固定脸盆时不要一次就完全拧紧螺栓，把脸盆位置调整到开孔中心位置后在完全拧紧螺栓。
3. 在与台面接触的脸盆边缘上，连续地涂上密封胶。
 4. 将已装好脸盆的台面安放到浴室柜上，在浴室柜台面与墙体接触的部分连续均匀涂密封胶。

Install Bathroom Basin

Note: If possible, install the faucet before installing the basin.

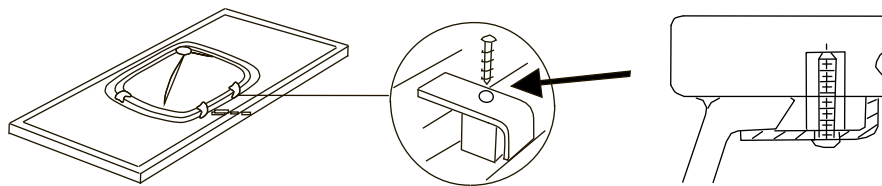
Note: Install table light with light put, avoid friction with hard objects.

A. Countertop Basin

1. Place the countertop in the correct position of the bathroom cabinet, and apply sealant continuously and evenly on the part of the bathroom countertop in contact with the wall.
2. Spread a small amount of sealant evenly on the installation site, and then place the washbasin on the countertop.

B. Undercounter Basin

1. The mesa will open good basin hole face down the horse in a soft pad.
 2. The washbasin bolted preset position from behind the scenes.
- Note:** Please don't at fixed basin once is fully tighten the bolts, the washbasin position adjustment to the hole center location in fully tighten the bolt.
3. In contact with the mesa on the edge of basin, continuously coated with sealant.
 4. Will have been installed on the ark of the mesa to add to the bathroom basin, and apply sealant continuously and evenly on the part of the bathroom countertop in contact with the wall.

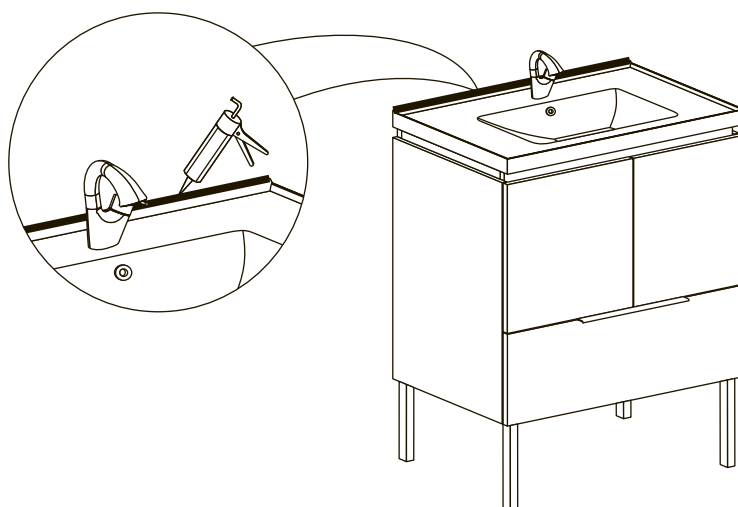


C. 一体盆台面

将一体盆放到柜体上，在一体盆和墙的接缝处打上玻璃胶。

C. Install Artificial Stone Basin

Put the basin on the cabinet and apply mildew-proof neutral glass cement on the joint between basin and wall.



四、安装落水管和龙头

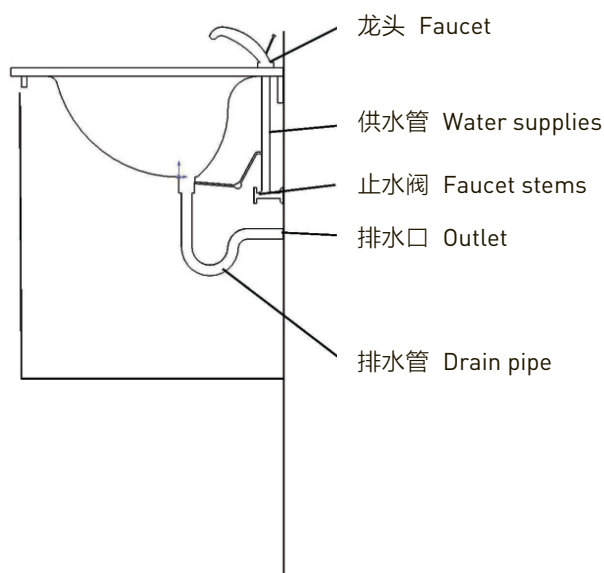
A. 入墙式排水管（P弯管）

请遵照如图所示安装排水管和龙头。请遵照供应商所提供的说明在墙上设置进、排水管位置。您可以调节隔板的高度以适合排水管的位置。

Connect the Drain Pipe

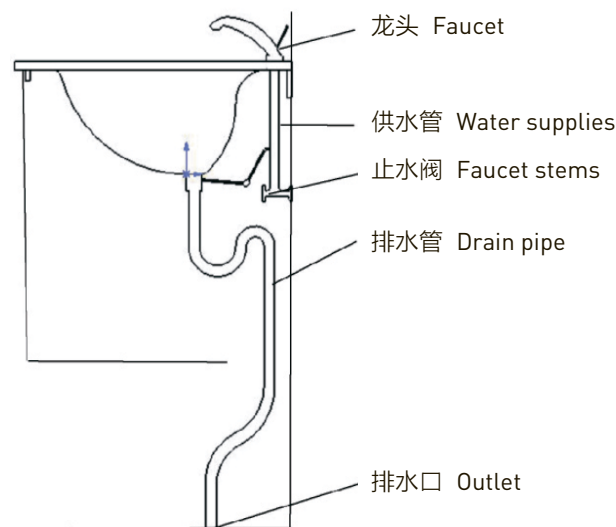
A. Wall Drain Pipe (P-type Elbow Pipe)

Install the drain pipe and faucet according to the figure below. Please refer to the instructions provided by the supplier for how to define the position of the inlet and outlet pipes.



B. 地排水管（S弯管）

请遵照如图所示安装排水管和龙头。请遵照供应商所提供的说明设置进、排水管位置。



注意：热水（H）及冷水（C）入口必须连接至正确的进水管。安装冷热供水管必须使用隔离阀。



- 请确保所有洗衣盆排水的连接处都装有防水密封圈。
- 管道连接处需要留有检修空间，以备日后管道维护之用。

B. Floor Drain Pipe (S-type Elbow Pipe)

Install the drain pipe and faucet according to the figure below. Please refer to the instructions provided by the supplier for how to define the position of the inlet and outlet pipes.

Note: The hot water (H) and cold water (C) inlets must be connected to the correct water inlet pipe. Hot and cold water supply pipe installation must use isolation valve.



- Make sure that all the drainage connections of the washtub are equipped with waterproof seals.
- There should be maintenance space at the pipe connection for future pipeline maintenance.

五、完成浴室柜安装

1. 调整铰链螺丝使门板平整。
2. 将拉手安装到门板上。如果拉手预装在柜门背面，需要拆下，并安装到正面。
3. 根据制造商提供的说明书，将龙头安装上脸盆或者台面。
4. 连接冷热供水管。
5. 安装落水，并上紧。
6. 打开冷、热水阀门，检查供水管接头处是否有渗漏。

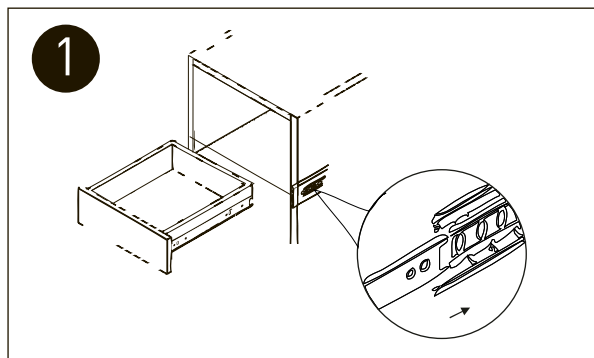
Finish Installation of Bathroom Cabinet

1. Adjust the hinge screws to make the door flat.
2. Install the handle on the door panel. If the handle is pre-installed on the back of the cabinet door, it needs to be removed and installed on the front.
3. Install the faucet on the washbasin or countertop.
4. Connect the hot and cold water supply pipes.
5. Install the falling water and tighten it.
6. Open the cold and hot water valves and check for leaks at the water supply pipe joints.

抽屉的拆卸、安装和调节

一、上轨道的拆卸、安装

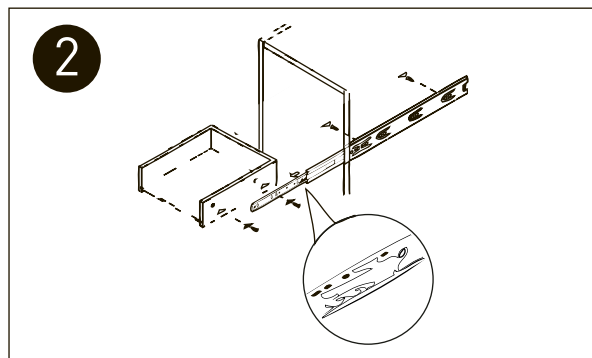
如图所示拆卸，安装抽屉滑轨。



Drawer Disassembly, Installation and Adjustment

Sliding Rail Disassembly, Installation

Remove, installation drawer slides as shown



二、下轨道的拆卸、安装和调节

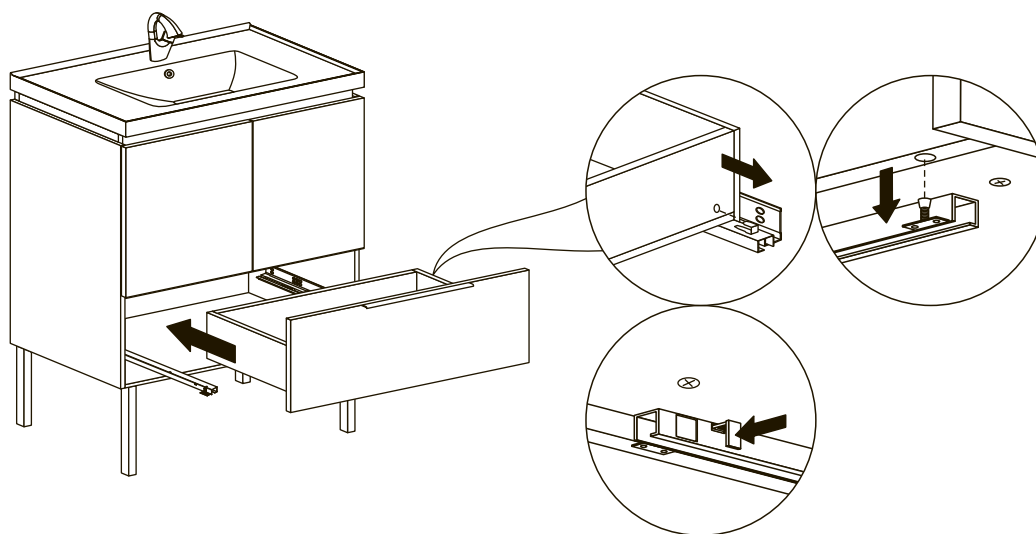
1、安装方法

- 1). 把动轨从滑轨上拉出来，把抽屉放置到滑轨上卡进到相应孔位。
- 2). 把固定销压入抽屉侧板，固定抽屉的位置，然后把抽屉推进柜体，完成安装。

Following Sliding Rail Disassembly, Installation and Adjustment

Installation Method

- 1). The dynamic track out from the slippery course, place your drawer to slide the card into the corresponding hole.
- 2). Pressed fixed pin into the drawer sides, fixed the position of the drawer, and then push the drawer cabinet put oneself in another's position, complete the installation.

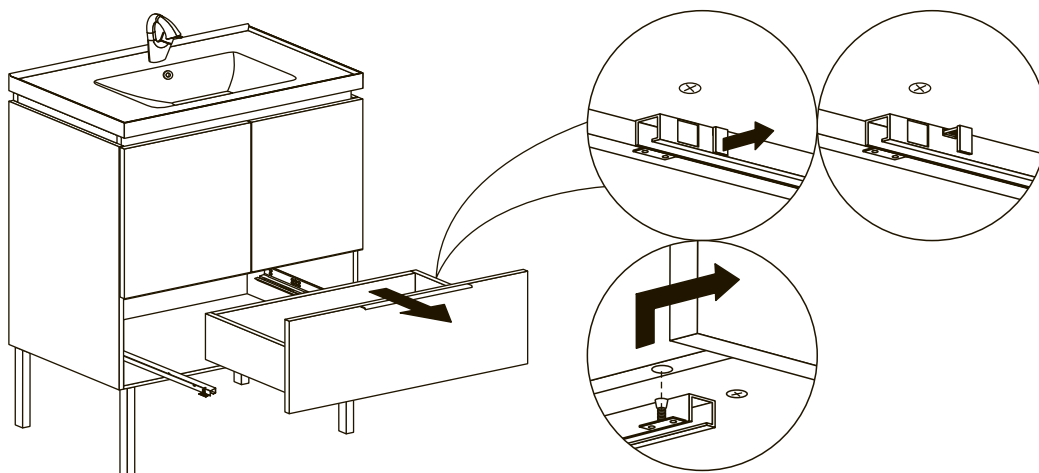


2、拆卸方法

把固定销从抽屉侧板抽出，将抽屉上提同时向外拉抽屉，拆卸完成。

Disassembly Method

The fixed pin from the drawer sides, the drawer lift to pull the drawer at the same time, remove the finish.

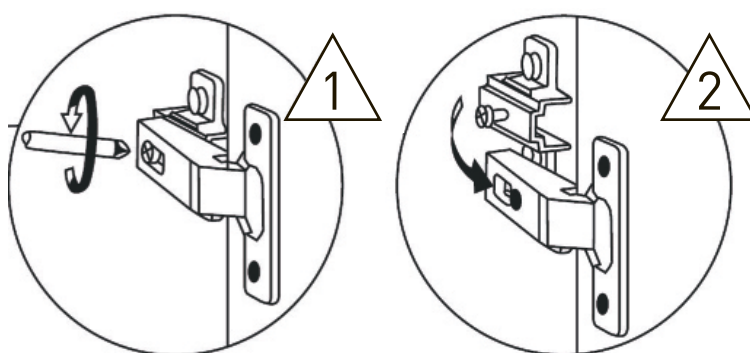


门铰链的拆卸、安装和调节

1. 摩恩浴室柜使用了快装铰链，使用卡紧装置安装门铰链，拆卸过程相反。

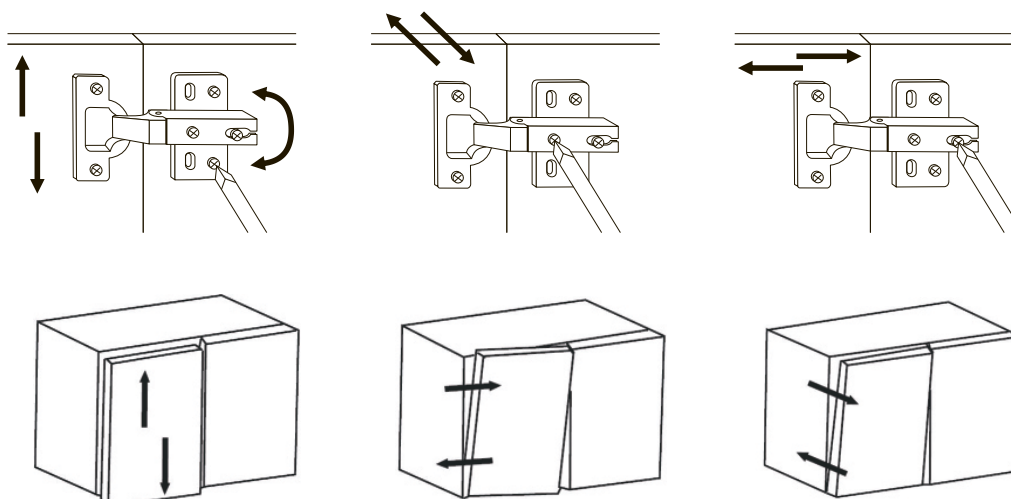
Remove, Install and Adjust Hinge

1. MOEN bathroom cabinet uses quick mounting hinge, and uses clamping device to install door hinge. The disassembly process is opposite.



2. 按照下图所示三向调节所有的门板铰链，使门板水平整齐。门板与门板间隙均匀，门板与柜体之间严丝合缝。

2. Adjust all door hinges in three directions as shown in the figure below to make the door panels level and neat. The gap between the door panel and the door panel is even, and the door panel and the cabinet body are tightly connected.



浴室柜的保养

一、浴室柜使用环境要求

- **干湿分离的卫生间：**淋浴间和其它区域相分隔，淋浴的水不会四处飞溅，是配置浴室柜的最佳环境。
- **非干湿分区的卫生间：**浴室柜较易被溅水或受潮，其柜体基材可能会发霉膨胀，从而影响使用寿命。

日常使用注意事项：

- a. 保持卫生间的空气流通及地面的干燥。
- b. 不允许水溅落到浴室柜柜体上。如果不小心沾上水，要及时用干抹布擦干，保持柜体干爽洁净。

二、日常清洁与保养

- 切勿让儿童爬上浴室柜或承受重压，以防发生危险或造成损坏。
- 非使用时不允许被水冲洗或水溅落到柜体上。若有水，请及时用干布擦干（包括洗浴后的冷凝水）。
- 用软布定期清洁、擦拭。
- 大理石台面如有划伤，可涂上牙膏，用布擦拭打磨。龙头、拉手等五金配件，一段时间后会出现水渍，可用温和的清洁剂或皂液进行清洁。
- 照明灯等电器连接要确保绝缘、防潮；镜面最好用鹿皮经常擦拭，可以保障使用质量经久如一。
- 卫生间请保持良好的通风状态。有条件的可以干、湿分离，尽量保持浴室空气畅通，养成开窗开门的习惯。

Bathroom Cabinet Maintenance

Use Environmental Requirements

- The toilet is separating dry space from moist space: The shower room is separated from other areas. It is the best environment for configuring bathroom cabinet.
- The toilet is not separating dry space from moist space: The bathroom cabinet is likely to be splashed or damp, and the base material of the cabinet body may become moldy and swell, which will affect the service life.

Daily Usage Considerations:

- a. Keep the air circulation in the toilet and dry the floor.
- b. Do not allow water to splash on the cabinet body. If you accidentally get water, wipe it with a dry cloth in time to keep the cabinet dry and clean.

Cleaning and Maintenance

- Do not allow children to climb on the bathroom cabinet or bear heavy pressure to prevent danger or damage.
- Do not rinse with water or be splashed when it is not in use. If there is water, please wipe it dry with a dry cloth in time (including the condensed water after bathing).
- Clean and wipe regularly with a soft cloth.
- If the marble countertop is scratched, you can apply toothpaste and wipe it with a cloth. Hardware accessories such as faucets and handles will appear water stains after a period of time, you can clean them with mild detergent or soap.
- The electrical connection of lighting lamps and other electrical appliances should be insulated and moisture-proof; the mirror surface is best to be wiped with deer skin frequently to ensure the consistent quality of use.
- Please keep the bathroom well ventilated, and separate dry and wet if possible, try to keep the bathroom air unobstructed, and windows and doors open.

