



INS 2275

温馨提示/Installation & Maintenance



- 1.产品安装前，请务必打开冷热供水，先将供水管内积累的杂质冲洗干净，以免损坏龙头。  
Prior to installing new faucet, flush supply lines to remove any accumulated debris.  
Accumulated debris can damage new faucet.



- 2.本产品建议由有经验和有资质的专业人员进行安装，以免安装质量问题造成不必要的损失。  
Faucets should be installed by a qualified & experienced person to ensure proper installation.



- 3.本产品必须在在安全供水压力下(公称压力不大于1.0MPa) 进行使用。确保龙头良好使用，请保持冷热水的供水压力平衡。  
Water supply pressure should not exceed 1.0 MPa. For best faucet performance, hot & cold supply pressures should be approximately equal.



- 4.本产品适用于建筑物内冷热供水管路上，介质温度不大于90摄氏度;不能在除水以外的其它流体环境中使用或者其它用途；请注意因为产品使用环境温度过低(低于3℃)或者环境温度过高（高于90℃）而造成产品或者零件损坏  
Faucet is for indoor use only. Hot water supply temperature should not exceed 90°C. To avoid damaging faucet, the ambient temperature at the site of installation should be greater than 3°C and less than 90°C.



- 5.本产品表面不能用钢丝球等坚硬材质擦洗，以免损坏表面镀层，建议使用柔软材质进行清洗;本产品不能用酸、碱等物质清洗，建议使用中性清洁剂进行清洗。  
Clean faucet with only water and a soft cloth. Do not use abrasive cleaning pads or harsh/abrasive chemicals, these will damage faucet finish.



- 6.在同等压力下，如果发现水流量减小，请及时清理产品水嘴口部的过滤网。  
If water flow decreases over time, remove aerator & rinse out accumulated debris



- 7.请根据使用说明轻开轻关使用产品；请不要用外力推压、摇晃龙头，以免损坏龙头。  
Use faucet only as directed in instruction manual, do not abuse or misuse faucet.



- 8.产品如果配备专用工具，请妥善保管，以备日后维修保养使用。  
Keep instruction manual and any special tools provided for maintenance & future reference.



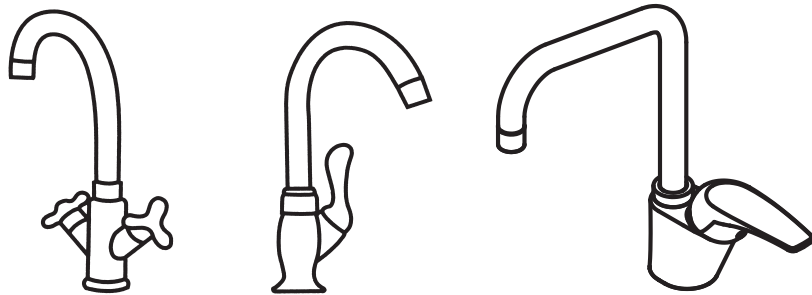
- 9.在更换或者拆卸龙头前，务必先关断水源，然后打开龙头，释放供水管内压力，并检查水路，确保水源完全关断。  
Always turn water supply OFF before removing existing faucet or disassembling the valve.  
Open faucet handle to ensure complete water shut-off has been accomplished.



- 10.如果长时间外出，请事先关闭水龙头角阀，打开水龙头开关释放龙头中的压力和积水。  
If faucet will not be used for a long period of time, shut off water supply to faucet. Open faucet handle to release pressure.



摩恩公司保留对产品进行修改、改进的权利；技术参数如有改变，恕不另行通知。  
MOEN reserves the right to modify or improve our products, Products shall be subject to any changes without additional notice.



Instruction Sheet for Kitchen Faucet

厨房龙头产品安装说明书

FIVE (5) YEAR LIMITED WARRANTY

Moен products have been manufactured under the higher standards of quality and workmanship. Moen warrants to the original consumer (including hotel use) that, should the faucet's cartridge ever develop a leak or drip during this 5 year warranty period. Moen will provide FREE OF CHARGE the parts necessary to put the product back in good working condition. This warranty shall be effective from the original date of purchase as shown on the original purchase receipt. The warranty period for other faucet components, such as: hoses, hand showers, waste assemblies, handles, caps/covers, lift rods, & aerators is 1 year. Cosmetic damage during normal use (scratches, dents, etc.) is not covered by warranty. This warranty is valid for the original consumer only (including hotel use), and excludes industrial or commercial use of the product (except for hotel use). Product damage due to installation error or product abuse/misuse is not covered by warranty, whether performed by a contractor, service company, or the original consumer. Labor charges arising from, as well as incidental or consequential damage incurred during, installation, repair, or replacement is not covered by warranty.



MOEN (Shanghai) Kitchen&Bath Products CO.,LTD

Unit A,8th floor, Lu jia Zui Investment

Building,360 Pu Dian Rd.,Pudong,

Shanghai 200122 P.R. China

Service Hotline:400-630-8866

Product Name: \_\_\_\_\_ Product No.: \_\_\_\_\_  
(only for consumer)

请您将此卡寄到下面地址，谢谢！

寄：

摩恩(上海)厨卫有限公司  
上海市浦东新区浦电路360号  
陆家嘴投资大厦8楼A单元 邮编：200122

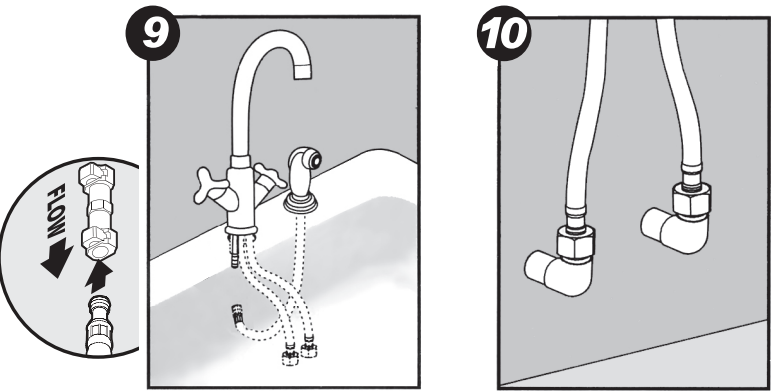
TO:

MOEN (Shanghai) Kitchen&Bath CO.,LTD  
Unit A,8th floor, Lu jia Zui Investment  
Building,360 Pu Dian Rd.,Pudong,  
Shanghai 200122 P.R. China

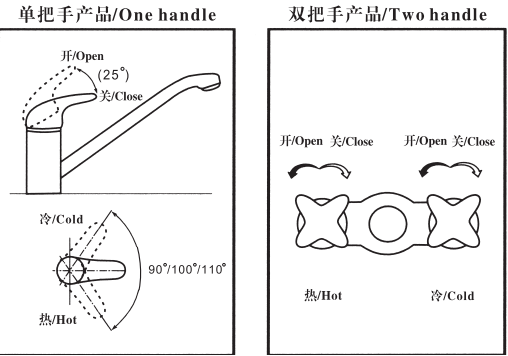


\*\*\*本说明书仅指示安装步骤，产品以实物为准\*\*\*

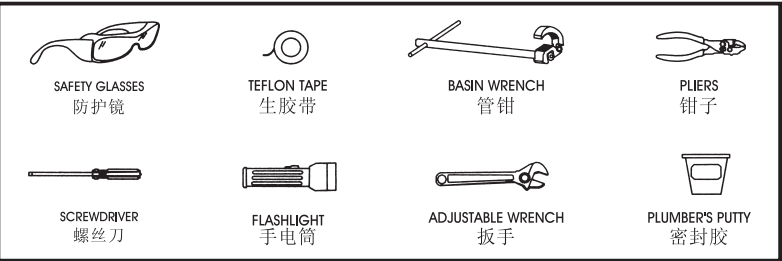
Actual product appearance may differ from images in instructions.



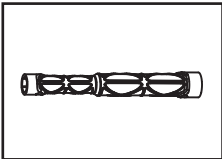
### 产品使用说明 Operation Instructions



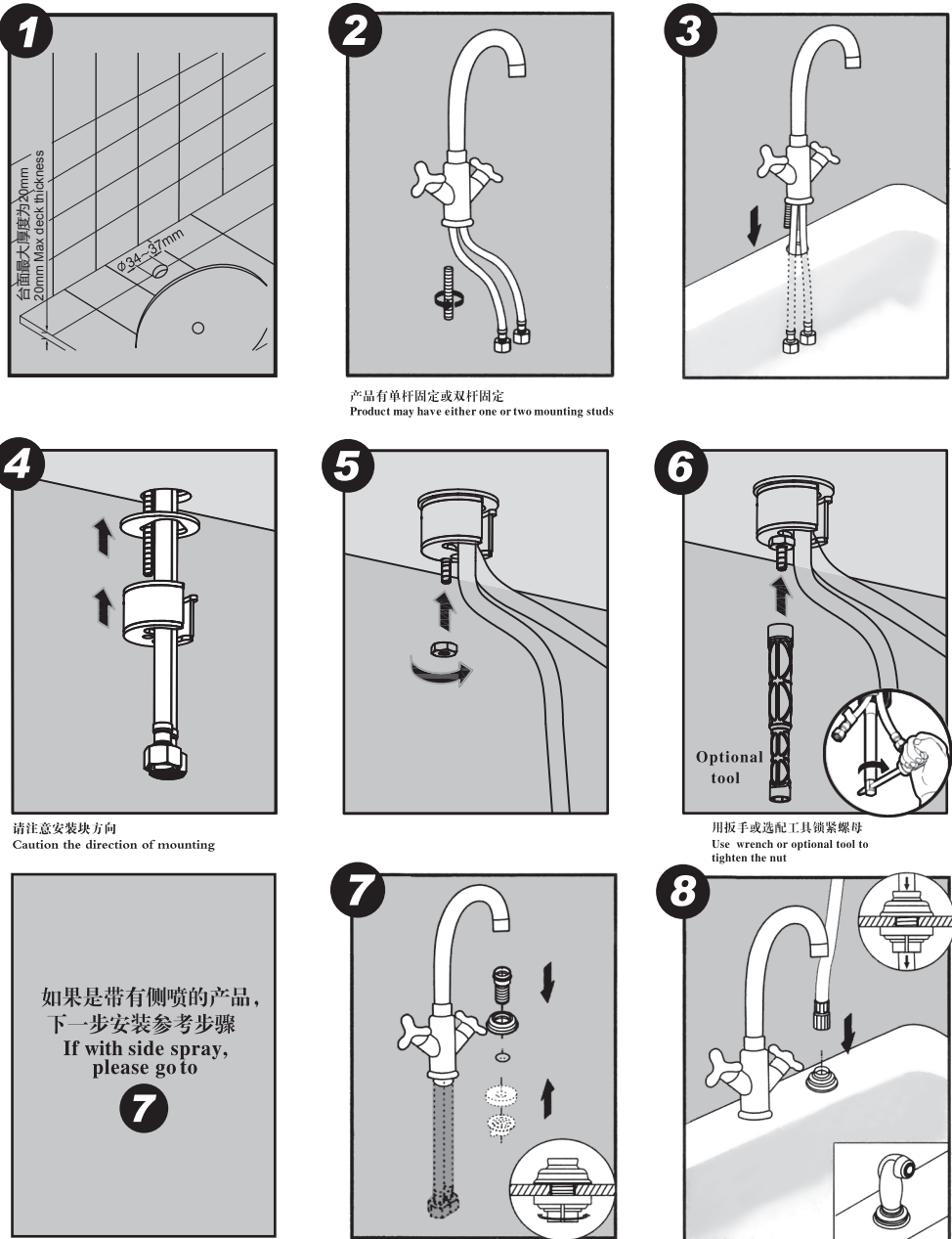
### 应备工具 Helpful Tools



### 选配工具 Optional tool



### 产品安装步骤 Installation Instructions



### 五 (5) 年有限保证责任书

摩恩的产品是在高质量标准及生产工艺下制造的。摩恩公司保证原始消费者和酒店行业购买者在五 (5) 年期间内 (从购买者的原始收据所示的日期起生效), 如果龙头芯轴有渗漏或滴水现象, 摩恩公司将免费提供所需配件以使该龙头恢复到良好使用状态。

其它附件如软管、花洒、落水、把手、装饰盖、提拉杆、混水器等 的保修期均为1年有限。所有产品的外观损伤、划痕痕迹等不属于保修范畴。

以上保证仅对原始消费者和酒店行业的购买者有效, 并不包括本产品 在工业, 商业, 贸易和非酒店行业的使用。以及由于安装错误, 产品滥用、 水压不高、水中杂质过多及不正当的保养所导致的问题, 无论这些损坏是 由建筑承包商, 服务公司或由用户本人安装所造成的。摩恩公司对在安装 维修, 替换等方面所引起的人工费用或产品损坏将不负责, 对连带的后 果性损坏也不负责。

此保证书的最终解释权归摩恩公司所有。



摩恩 (上海) 厨卫有限公司  
上海市浦东新区浦电路360号  
陆家嘴投资大厦8楼A单元 邮编: 200122  
热线电话: 400-630-8866  
产品名称: \_\_\_\_\_ 产品编号: \_\_\_\_\_

(客户填写)

### 合格证

检验员: \_\_\_\_\_  
生产日期: \_\_\_\_\_

### 服务卡

感谢您回答下列问题, 以便我们能更好的为您服务。			
您的地址:		邮编:	
电话:		传真:	
您所使用的产品名称:		型号:	
项目名称:		地点:	
产品用于:		高级公寓:	
酒店:		星级:	
		商务场所:	
		有无净化水设施:	
		其它:	
您是如何知道我们的产品的:			
报纸媒介:		一般家用:	
		高级公寓:	
		商务场所:	
		其它:	