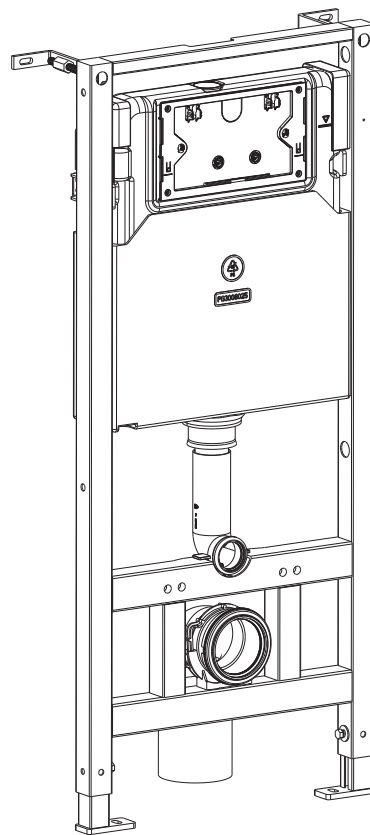


安装说明书

INSTALLATION INSTRUCTIONS

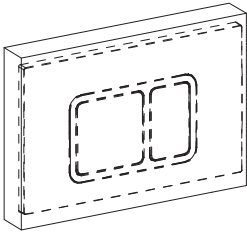
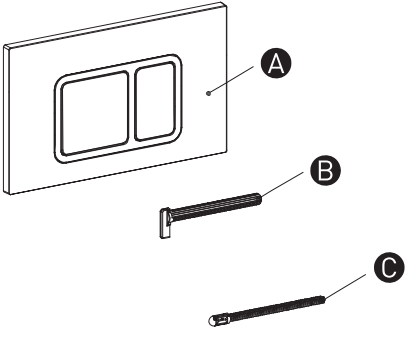
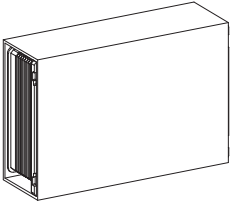
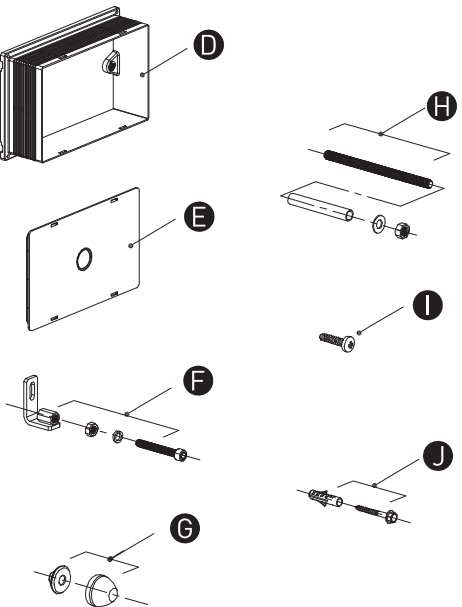
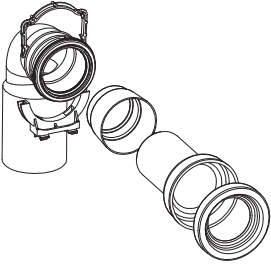
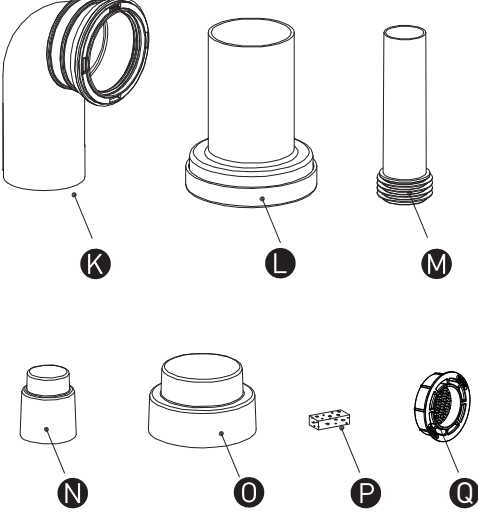
www.moen.cn

| | | | |
|---|---|--|---|
|  <p>锯子 Saw</p> |  <p>活动扳手 Adjustable Wrench</p> |  <p>水平尺 Level Ruler</p> |  <p>十字螺丝刀 Phillips Screwdriver</p> |
|  <p>护目镜 Safety Glasses</p> |  <p>六角扳手 Hex Key</p> |  <p>卷尺 Tape Measure</p> |  <p>螺纹密封带 Thread Seal Tape</p> |
|  <p>美工刀 Utility Knife</p> |  <p>锉刀 File</p> |  <p>尺子 Ruler</p> |  <p>电钻 Hand Drill</p> |



Record Purchased Model Number:
(Save instruction sheet for future reference)

零件清单 Parts List

| | |
|--|---|
| <p>面板配件 Panel Accessories</p>  |  <p>A. 面板 (x1) B. 连接杆 (x2) C. 按压杆 (x2)</p> <p>A. Panel (x1) B. Connecting Rod (x2) C. Push Level (x2)</p> |
| <p>围包配件 Enclosure Accessories</p>  |  <p>D. 安装盒 (x1) E. 安装盒盖子 (x1) F. 墙脚组件 (x2) G. 装饰帽组件 (x2) H. 挂厕螺栓组 (x2) I. 自攻螺钉 (x4) J. 膨胀螺栓组 (x4)</p> <p>D. Installation Box (x1) E. Installation Box Cover (x1) F. Wall foot Foot Components (x2) G. Decorative Cap Assembly (x2) H. Toilet Bolt Group (x2) I. Self-Tapping Screws (x4) J. Expansion Bolt Group (x4)</p> |
| <p>管配件 Pipe Fittings</p>  |  <p>K. 排污弯管 (x1) L. 排污直管 (x1) M. 冲刷直管 (x1) N. 冲刷弯管堵头 (x1) O. 排污弯管堵头 (x1) P. 海绵条/硅油 (x1) Q. 节流器 (x1)</p> <p>K. Sewage Elbow (x1) L. Straight Sewage Pipe (x1) M. Flush Straight Pipe (x1) N. Washing Elbow Plug (x1) O. Sewage Elbow Plug (x1) P. Sponge Stick/Silicone Oil (x1) Q. Current limiter (x1)</p> |

安装前注意事项

- 请确认包装内物品是否完整。如有缺失，请及时与我们的客户中心取得联系。以上物品图片仅供参考，以实物为准。
- 请仔细阅读以下说明。为避免伤害身体或损坏设备，请按照说明一步一步安装设备。
- 根据最新的生产资料执行说明书。我们保留更改规格、包装权利，恕不另行通知。
- 因使用其他公司的任何零件而导致的任何故障，我们概不负责。
- 使用环境温度：5℃-45℃。
- 进水水压范围：0.10MPa-0.75MPa。
- 进水口规格：G1/2"外牙。

Precautions before Installation

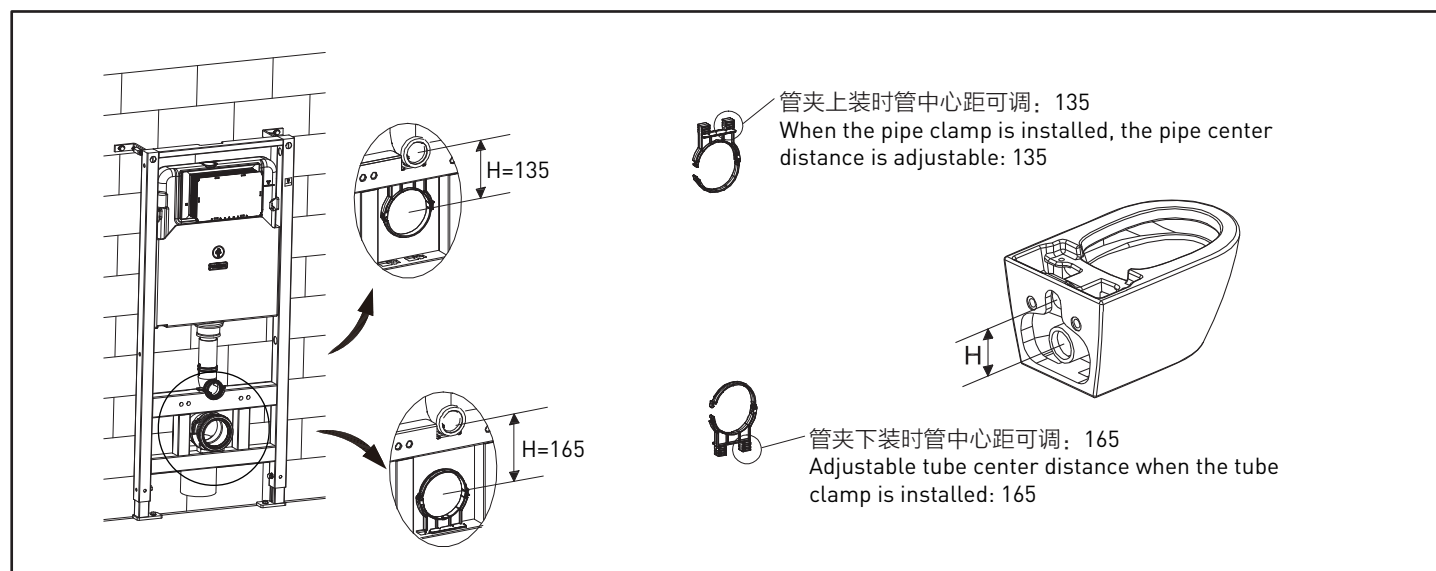
- Please confirm whether the contents of the package are complete. If there is any missing, please contact our customer center in time. Image is for reference only, style varies by model.
- Please read carefully the following instruction. In order to avoid injuring body or damaging equipment, please install the equipment following the instruction step by step.
- The instructions are complied according to the up-to-date production information. We reserve the rights to make the changes about specifications, packaging without prior notice.
- We shall not be responsible for any failure of using any parts from other companies.
- Ambient temperature: 5℃-45℃.
- Inlet water pressure range: 0.14MPa-0.75MPa.
- Water supply method: Ball valve G1/2.

安装说明

如下图，确认陶瓷马桶的孔距H，选择管夹安装方式，获取对应冲水孔与排污孔的孔距。
(出厂默认135孔距安装)

Installation Notes

As shown in the figure below, confirm the hole distance H of the ceramic toilet, select the pipe clamp installation method, and obtain the hole distance between the flush hole and the sewage hole. (Factory default 135 hole pitch installation)



 FFL₀ = 工程完工后的地板面

Min 最小
Max 最大


Min 65 Max 115

Min 50

Min 320

Ø110 (内径)
(Inner Diameter)

As shown in the figure below, the distance between the sewage pipe and the wall, the position of the sewage pipe, and the aperture must meet the size requirements shown in the figure. If it does not meet the requirements, please ask professional installers to make adjustments and changes.

 This product is not equipped with adapter pipes of various specifications. If the inner diameter of the sewer pipe is not $\phi 110$, please ask professionals to purchase and prepare it in advance.

⚠ FFL₀ = Floor surface after the project is completed

Technical drawing illustrating the installation of a 110mm diameter anchor bolt (Φ110 (内径)) into a brick wall corner. The drawing shows the required dimensions for the bolt and its placement:

- Anchor Bolt Diameter:** Φ110 (内径) (Inner Diameter)
- Embedment Depth:** Min 180, Max 300
- Embedment Length:** Min 50
- Corner Dimension:** Min 320

墙排管
Exhaust Pipe Wall

排污直管
Straight Sewage Pipe

密封圈
Sealing Ring

转接管
Transfer Nozzle

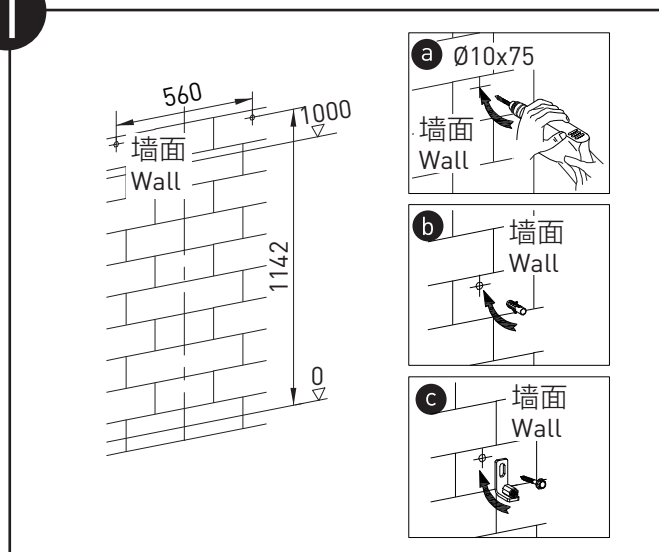
密封胶圈
O-Ring Seal

说明：此转接管与密封胶圈需客户自行购买！非厂家标配零件。
Note: This transfer nozzle and sealing rubber ring must be purchased by customers! Non-manufacturer's standard parts.

警告：依墙排管材质选购转接管材质，当墙排管为HDPE材质，需选购HDPE材质的转接管进行热熔连接，当墙排管为PVC材质，需选购PVC材质转接管用PVC胶粘胶，否则有漏水的风险！
Warning: According to the material of the wall pipe, choose the material of the pipe. If the wall exhaust pipe is MADE of Medium, you need to buy an Medium adapter for hot melt connection. If the wall exhaust pipe is made of Medium, you need to buy a Medium adapter with Medium adhesive, otherwise there is a risk of water leakage.

一. 安装铁架 Install the Iron Frame

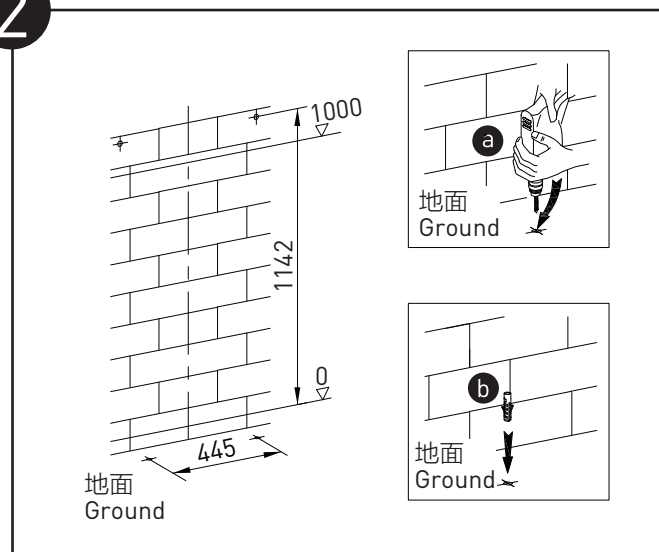
1



墙面预钻膨胀螺栓底孔（可将铁架靠在墙上，在墙面做孔位标记后进行钻孔。）

Pre-drill the bottom hole of expansion bolt on the wall (You can put the iron frame against the wall, drill holes after marking the holes on the wall.)

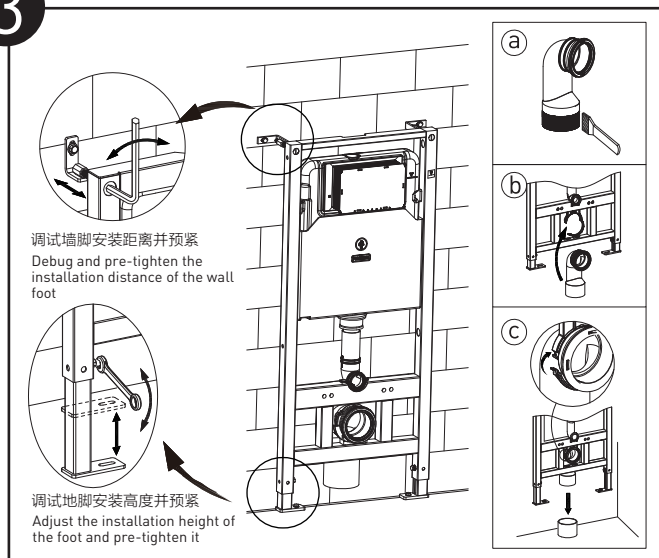
2



地面预钻膨胀螺栓底孔（可将铁架靠在墙上，在地面做孔位标记后进行钻孔。地脚亦可取出依实际要求调整方向装配后，取钻孔位置。）

Pre-drilled expansion bolt bottom holes on the ground (you can put the iron frame against the ground. The feet can also be taken out. After adjusting the direction and assembling according to actual requirements, take the drilling position.)

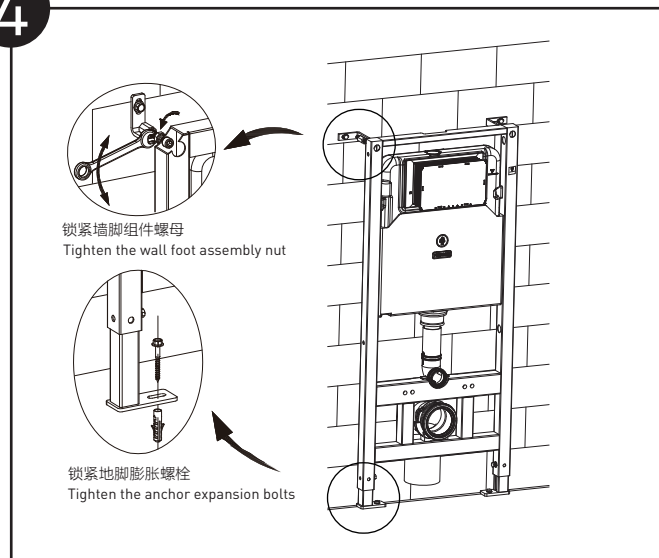
3



a. 取出排污弯管刷上PVC胶； b. 将排污弯管卡接在管夹上； c. 将整个产品提起，对准排污管插入，并再次补刷胶水。调试墙脚、地脚安装距离并预紧。

a. Take out the sewage elbow and brush it with PVC glue; b. Clamp the sewage elbow to the pipe clamp; c. Lift the entire product, align it with the sewage pipe and insert it, and apply glue again. Debug and pre-tighten the installation distance of wall feet and feet.

4



用圈尺确认铁架上的1米高度标记与实测值一致后拧紧锁紧墙脚组件螺母，锁紧地脚膨胀螺栓；完成铁架的安装。

Use a circle ruler to confirm that the 1 meter height mark on the iron frame is consistent with the actual measured value, and then tighten the wall foot assembly nuts and lock the anchor expansion bolts; complete the installation of the iron frame.

进水接口位置(规格: G1/2"外牙)
Water inlet connection position
(specification: G1/2" external thread)



Connect the water supply pipe.

螺钉
Screw



Use screws to lock the embedded box on the water tank.

This technical drawing illustrates the assembly of a door frame into a brick wall. The main view shows a vertical frame section with a door panel (labeled 1) and a handle (labeled 2). Two circular callouts provide detailed views of the internal components: the top callout shows the hinge mechanism and the bottom callout shows the lock mechanism. The frame is shown being secured into a brick wall using a masonry anchor.

将小堵头插到冲刷弯管管孔内。
将大堵头插到排污弯管管孔内。
将挂厕螺栓旋拧到铁架上。

Insert the small plug into the hole of the flushing elbow.
Insert the big plug into the hole of the sewage elbow.
Screw the toilet bolt to the iron frame.

注意：
瓷砖与预埋盒的间隙不能大于5mm；
隐蔽水箱的墙厚尺寸请控制在
20mm-90mm范围内；

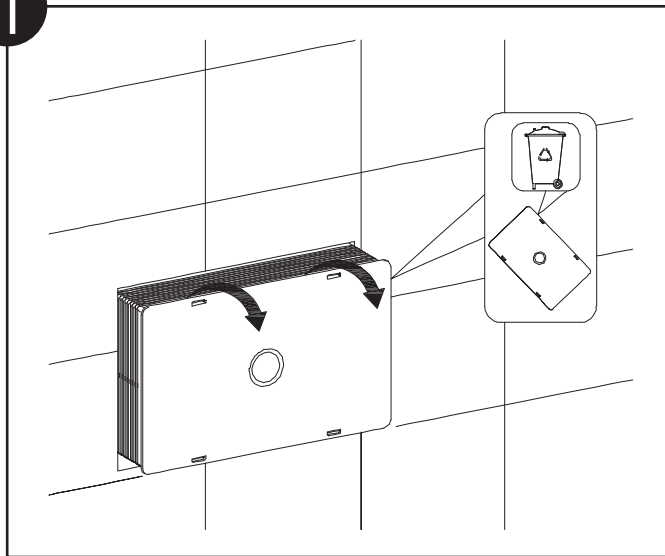
Note:
The gap between the ceramic tile and the embedded box cannot be greater than 5mm;
Please control the wall thickness of the concealed water tank within the range of 20mm-90mm;

用砖头或石膏板、复合板遮盖隐藏水箱，最后用瓷砖铺贴。墙壁厚度：最小20mm最大90mm。

Cover and hide the water tank with bricks or gypsum board or composite board, and finally pave it with tiles. Wall thickness: minimum 20mm and maximum 90mm.

二. 安装面板 Install the Panel

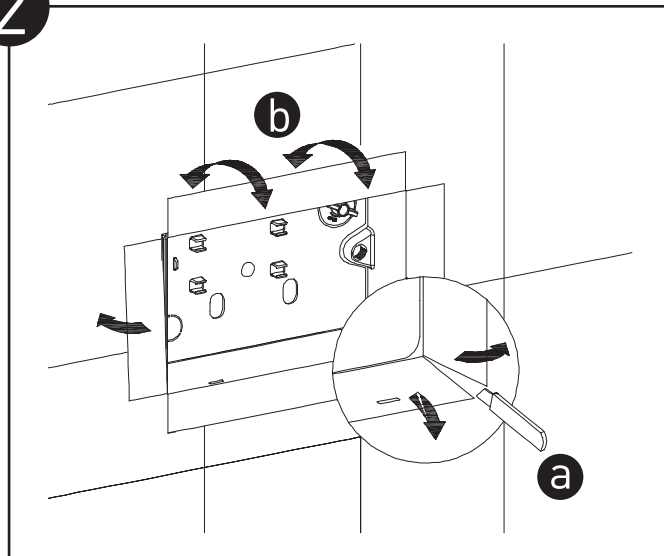
1



瓷砖铺贴完成后，拆下预埋盒盖子。

After the tiles are laid, remove the cover of the embedded box.

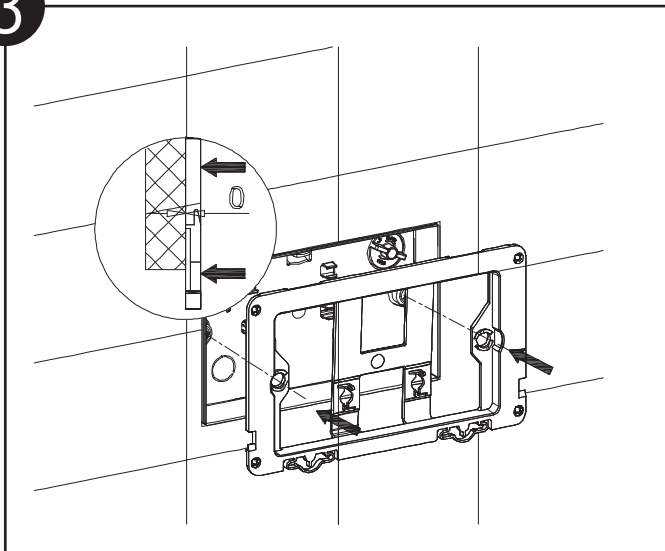
2



用小刀切割安装盒高出瓷砖面部份，将多余部份折弯后掰下丢弃。

Use a knife to cut the mounting box above the tile surface, bend the excess part and discard it.

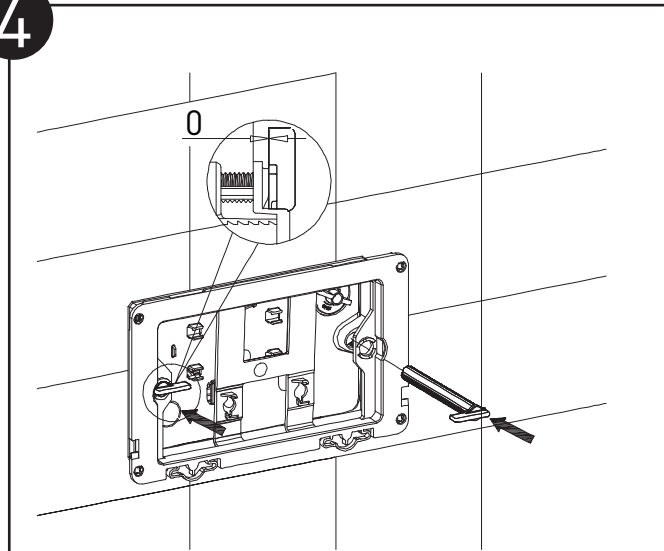
3



安装面板支架。

Install the panel bracket.

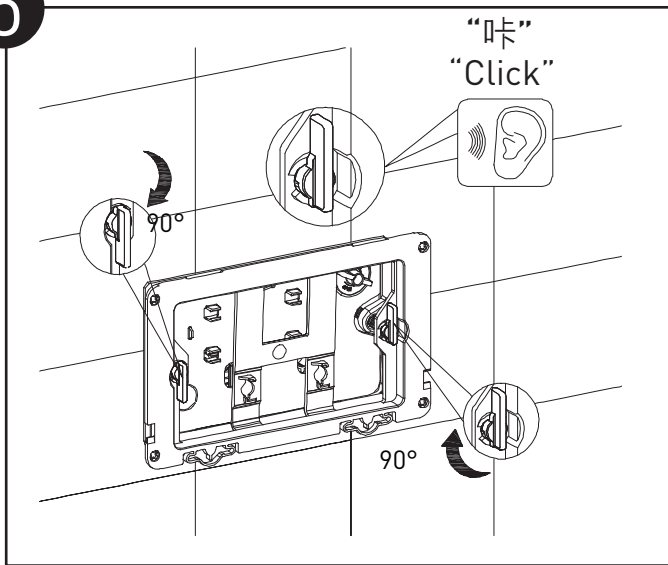
4



将连接杆插入面板支架的安装孔内，并对准预埋盒上的安装孔插入。

Insert the connecting rod into the mounting hole of the panel bracket, and align it with the installation hole on the embedded box and insert it.

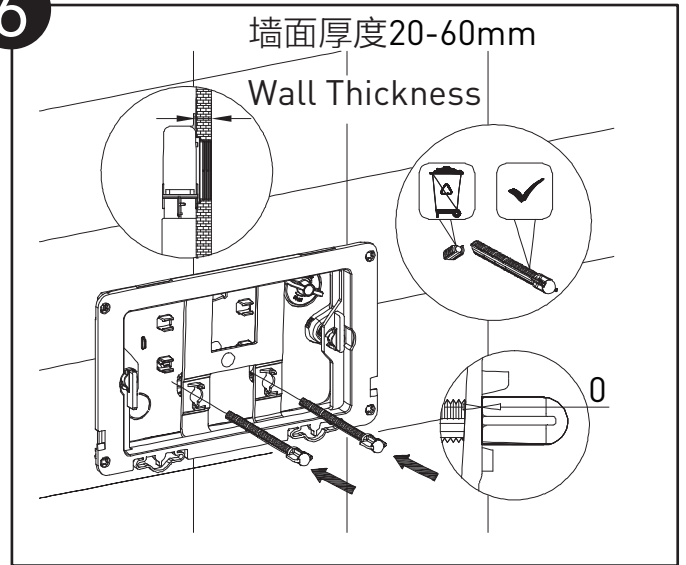
5



顺时针旋转90°锁紧。

Rotate 90° clockwise to lock.

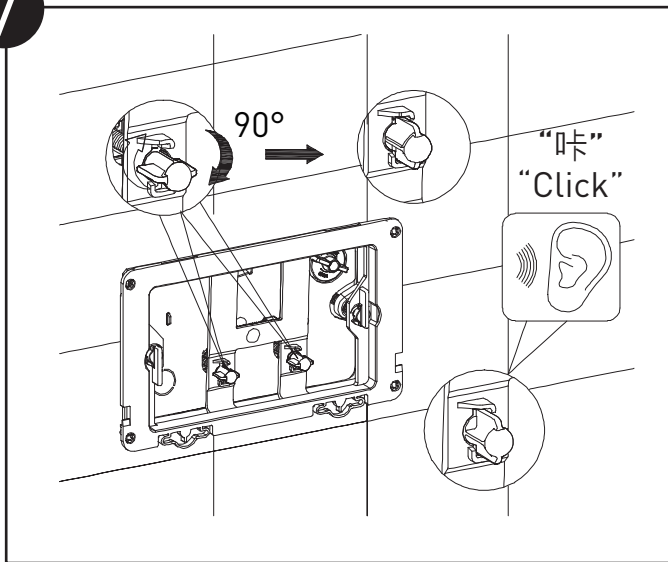
6



将按压杆插入面板支架的导向孔，并对准水箱内部的螺纹孔标记出多余部份后，用小刀切除多余部份。

Use a knife to cut the mounting box above the tile surface, bend the excess part and discard it.

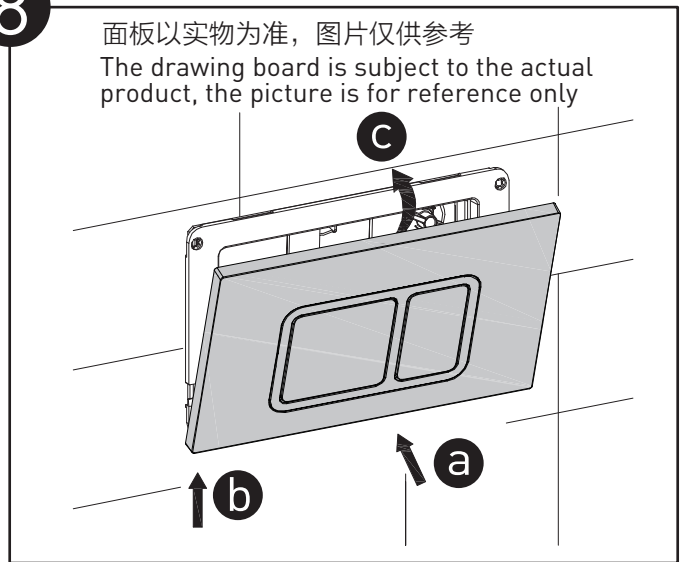
7



将正确尺寸的按压杆重新插入面板支架的导向孔，对准水箱内部的螺纹孔顺时针旋转90°锁紧。

Reinsert the pressing rod of the correct size into the guide hole of the panel bracket, and align it with the threaded hole inside the water tank and turn it clockwise by 90° to lock it.

8

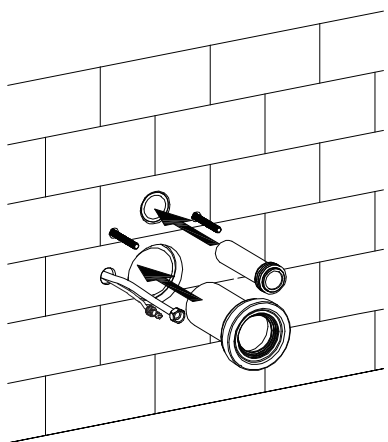


将面板扣在面板支架上，并确认安装牢固。

Fasten the panel on the panel bracket and confirm that it is firmly installed.

三. 安装挂墙式坐便器 Install the Wall Mount Intelligent Toilet

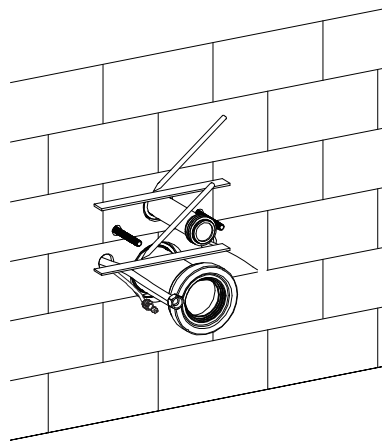
1



冲刷直管、排污直管插入对应管孔内。

Insert the flushing straight pipe and the sewage straight pipe into the corresponding pipe hole.

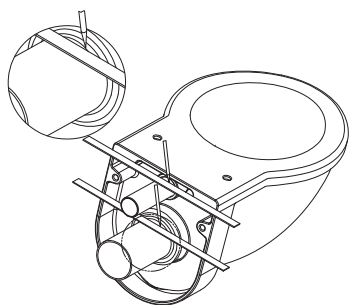
2



以墙面为基准，在管上划线做标记线。

Take the wall as the reference, draw a line on the tube to make a marking line.

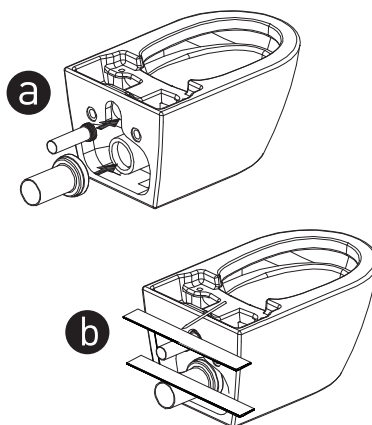
3



将马桶盖与陶瓷分离。

Separate the smart toilet lid from the ceramic.

4



将冲刷直管、排污直管插入陶瓷对应孔内，以陶瓷端面为基准，在管上划线做标记。

Insert the flushing straight pipe and the sewage straight pipe into the ceramic corresponding In the hole, mark the tube on the ceramic end face as a reference line.

如下图计算尺寸并锯掉冲刷直管、排污直管多余长度。
Calculate the size and saw off the flushing straight pipe and row as shown in the figure below. Excess length of dirty straight pipe.

Calculate the size and saw off the flushing straight pipe and row as shown in the figure below. Excess length of dirty straight pipe.

冲刷直管、排污直管口部做导向斜角。

The mouths of the flushing straight pipes and the sewage straight pipes are guided obliquely.

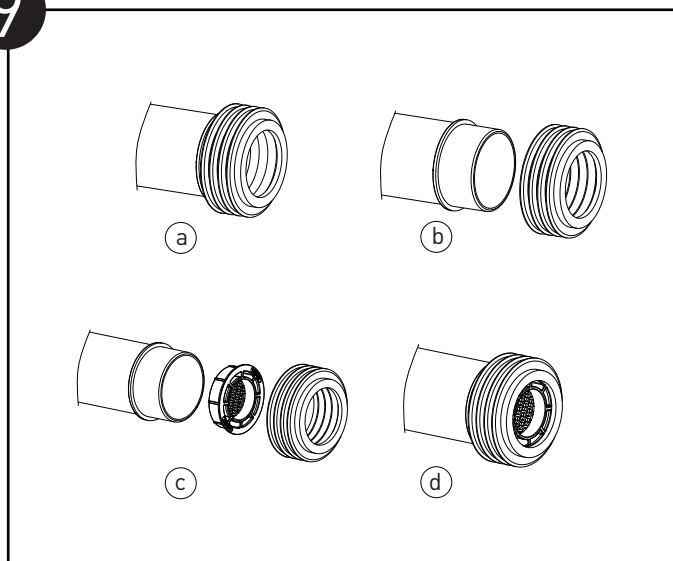
将保护陶瓷衬垫挂在螺杆上；将冲刷直管/排污直管进行预装。

Hang the protective ceramic liner on the screw,
Pre-assemble the flushing straight pipe and the
sewage straight pipe.

冲刷直管、排污直管对准墙上的孔，挂厕螺杆对准陶瓷安装孔，安装陶瓷，旋拧螺母将挂厕陶瓷预紧在墙面上。

The mouths of the flushing straight pipes and the sewage straight pipes are guided obliquely.

9



a. 冲刷直管（不带节流器）。

b. 取下密封圈。

c. 按正确方向、顺序放入节流器密封圈。

d. 安装完成。

备注：冲水压力不足时也可以选择不安装节流器。

a. Flush straight pipe (No current limiter).

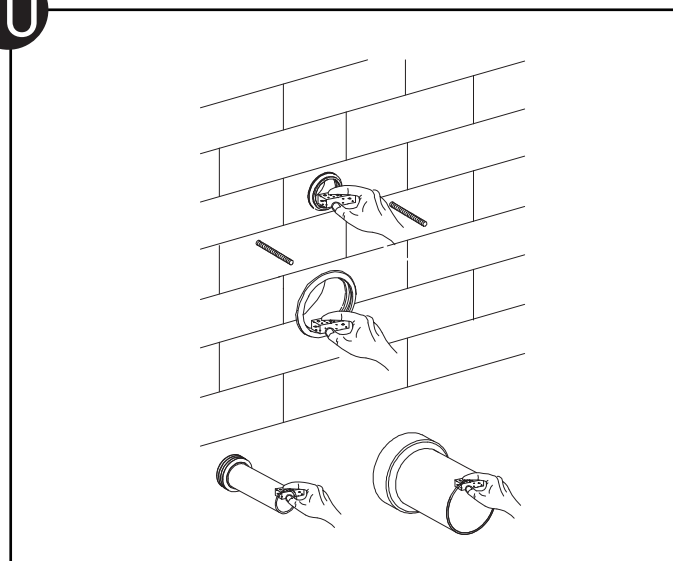
b. Remove the seal ring.

c. Put the current limiter seal ring in the correct direction and sequence.

d. Complete the installation.

Note: No current limiter can also be selected when the flush pressure is insufficient.

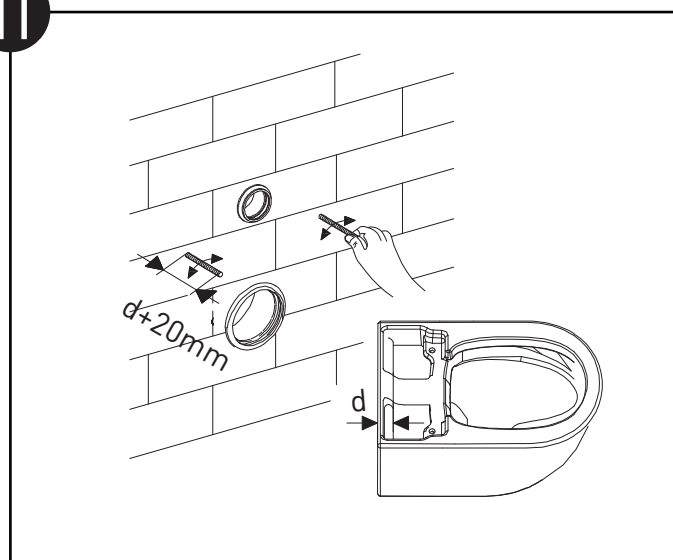
10



管口涂抹润滑剂。

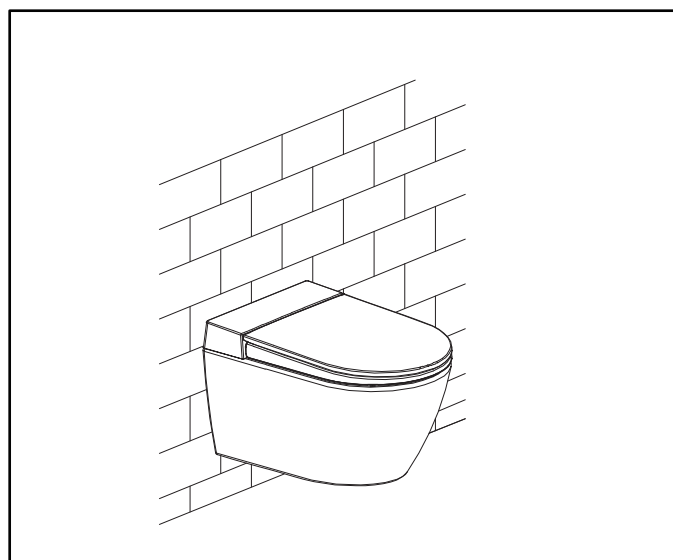
Apply lubricant to the nozzle .

11



旋拧调节挂厕螺杆外露长度。

Twist to adjust the exposed length of the toilet screw.



马桶安装方法请参考《壁挂坐便器安装说明书》。

Toilet installation method, please refer to the "Wall Mount Toilet Installation Instructions".

水效信息

水效等级、水效标识请见配套的陶瓷马桶产品上水效标识。

清洁保养说明

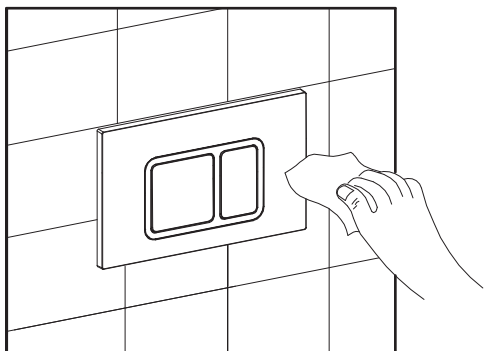
为了保证产品的正常使用，请定期对产品进行清洗保养。

面板的清洁保养：

当产品附着灰尘或污垢时，请用柔软的湿布擦拭产品。

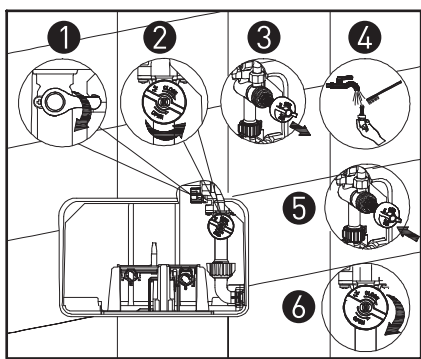
注意：

清洁保养塑料部分时，请使用稀释后的厨房用清洁剂（中性），请勿使用腐蚀性清洁剂或溶剂等物品，如厕所用清洗剂、住宅用清洗剂、汽油、香蕉水、去污粉以及尼龙刷子等。



进水过滤器的保养：

- 为了产品的耐用，请根据当地水质情况及时清洗过滤网。
- 当发现进水时间变长或者不进水，请及时清洗过滤网。拆卸过滤器时，请务必关闭进水开关。另外，安装过滤器时，请旋紧，以免漏水。建议3个月清洗一次过滤网。



- ① 关闭进水开关；
- ② 旋下过滤器；
- ③ 拔出过滤器；
- ④ 用清水冲洗；
- ⑤ 装入过滤器；
- ⑥ 旋紧过滤器并通水。

Water Efficiency

For water efficiency grade and water efficiency label, please refer to the water efficiency label on the matching ceramic toilet product.

Cleaning and Maintenance Instructions

Please clean and maintain the product regularly for the normal use of the product.

Panel Cleaning and Maintenance:

When the product adheres to dust or dirt, wipe the product with a soft damp cloth.

Note:

When cleaning and maintaining plastic parts, please use diluted kitchen cleaner (neutral), do not use corrosive cleaners or solvents, such as toilet bowl cleaner, residential cleaner, Gasoline, banana water, stain removing powder, and nylon brushes.

Inlet Filter Maintenance:

- For the durability of the product, clean the filter in time according to the local water quality.
- When you find that the water intake time is longer or does not enter, please clean the filter in time. When removing the filter, be sure to turn off the water inlet switch. In addition, when installing the filter, please tighten it to avoid water leakage. It is recommended to clean the filter once every 3 months.

- ① Turn off the water inlet switch;
- ② Unscrew the filter;
- ③ Pull out the filter;
- ④ Rinse with clean water;
- ⑤ Install the filter;
- ⑥ Tighten the filter and pass water.

警告：
不要使用或放入任何氯或任何化学相关成分到水箱内，使用此类产品将导致水箱内的组件损坏，并可能导致漏水而引发财产损失，以及保修条款无效。

Warning:
Do not use or put any chlorine or any chemical-related ingredients into the water tank. Using such products will cause damage to the components in the water tank, and may cause water leakage and cause property damage, and the warranty terms are invalid.

故障排除

如果发现类似故障，请先阅读以下内容尝试其处置方法来排解故障问题，若仍无法解决问题时，请联系销售单位或拨打客户服务中心电话进行联系。

Troubleshooting

Please read the following contents and try to solve the fault in other disposal methods if similar faults are found, or contact the sales department or call customer service center if the fault cannot still be solved.

• 进水阀的故障排除 Inlet Valve Troubleshooting

| 现象 Symptoms | 原因 Rootcause | 排除方法 Solution |
|---|--|---|
| 进水阀不进水 No water in the water inlet valve | 进水开关没打开 The water inlet switch is not turned on | 把进水开关打开 Turn on the water inlet switch |
| | 过滤网受水质影响而堵塞 The filter is blocked by the water quality | 按照说明书清理过滤网 Follow the instructions to clean the filter |
| 进水阀不止水 Inlet valve does not stop water | 进水阀表面结污垢，浮筒卡阻无法浮起工作 Dirt builds up on the surface of the inlet valve, and the float is blocked and cannot float | 清洗去除污垢 Cleaning to remove dirt |
| | 进水阀故障 Inlet valve failure | 请专业人员进行维修 Ask a professional to repair |

• 排水阀的故障排除 Flush Valve Troubleshooting

| 现象 Symptoms | 原因 Rootcause | 排除方法 Solution |
|--------------------|--|---|
| 漏水 Leaking | 排水阀受水质影响，零件表面结垢 The drain valve is affected by the water quality, and the surface of the parts is scaling | 清洗去除污垢 Cleaning to remove dirt |
| | 排水阀故障 Drain valve failure | 请专业人员进行维修 Ask a professional to repair |
| 不排水 Not working | 排水阀故障 Drain valve failure | 请专业人员进行维修 Ask a professional to repair |

产品售后保修条款

摩恩产品是在高质量标准及生产工艺下制造的，摩恩承诺为消费者购买的洁具产品提供有期限免费保修及终身维修服务

水箱免费保修期为3年，其它附件如软管、面板等的保修期均为1年有限。均自消费者购买日（以摩恩产品分销商开具的发票或收据上载明日期为准）起计。

免费保修范围为产品及产品配件（如软管，面板等）由于材质及工艺原因而造成的故障或损坏。免费保修期内，我们将无偿为您提供修理服务及更换发生故障的产品或产品配件。摩恩的售后服务责任仅限于对故障产品的修理，而不延及您因产品故障而发生的其他损失，法律另有规定的除外。

您需了解：产品外观碰伤、刻划痕迹，以及滥用及不正当保养所导致的故障或损坏，均不属于免费保修范围。即使在免费保修期内，属下列（1）-（5）情况之一的，需酌情收取修理费用：

1. 不能出示相符的保修卡和有效购买凭证情况的；
2. 未按使用说明书告知的使用方法和注意事项造成的故障；
3. 自行拆卸、维修、改装所造成的故障和损坏；
4. 由于不可抗力等外部原因引起的故障和损坏；
5. 由于运输、搬运、挤压等造成的损坏。

对于保修期外或不在保修范围内的产品，如需维修，摩恩将酌情收取上门费、人工费及材料费。

本保修条款仅对原始消费者和酒店行业的购买者有效，并不适用于本产品¹在工业、商业、贸易和非酒店行业的使用。

如对本保修条款内容有任何疑问，请拨打400 630 8866 咨询热线，或向当地分销商咨询。

MOEN LIMITED WARRANTY

We offer limited warranty and lifetime maintenance for Moen products, which are all manufactured with high standards of workmanship.

The period of warranty shall start from the date of purchase of the product (according to the invoice or receipt issued by Moen distributors) and shall cover a period of the following: The warranty period for water tank is 3 years, the warranty of other accessories such as hoses, panels, etc. is 1 year.

This warranty is your coverage against material and workmanship malfunction or defects in Moen products or components (such as hoses, panels etc.). During the warranty period, we offer free maintenance and changing of malfunctioned products or product components. Moen's after sales service liability is limited to the maintenance of faulty items and does not cover your other losses caused by product malfunction, except for otherwise stipulated by law.

Cosmetic damages (scratches, dents, etc.) and malfunction or defects caused by abuse or improper maintenance is not covered by this warranty. Although the warranty period remains valid, in case of the following conditions (1) - (5), the maintenance cost (material cost and labor cost) shall still be charged as the case may be:

1. Corresponding warranty card and valid invoice cannot be presented;
2. Faults were caused by the inobservance with the instructions and precautions provided in the user's manual;
3. Damages and faults were caused by self-actuated dismantling, repair and refit;
4. Faults and damages were caused by external factors such as force majeure;
5. Damages were caused by transportation, unloading and extrusion, etc.

This warranty is valid for the original consumers only (including hotel use), and excludes industrial and commercial use of the product (except for hotel use). This card is only responsible for product maintenance rather than any other liabilities.

In the event that the product requires maintenance but exceeds the warranty period, or that the product is not covered by this warranty, labor cost and material cost shall be charged as the case may be.

Please call 400-630-8866 or contact local dealer for any question.

MOEN® 摩恩

合 格 证
Compliance Certification

壁挂马桶隐藏式水箱
Conceal Cistern for Wall
Mount Intelligent Toilet

产品名称
Product Name

检验员

Inspector

生产日期

Date of Production

摩恩（上海）厨卫有限公司

中国（上海）自由贸易试验区富特北路399号

邮编：200131

MOEN (SHANG HAI) KITCHEN & BATH PRODUCTS CO., LTD

**No. 399 Fute North RD, China (Shanghai) Pilot Free Trade Zone,
Shanghai 200131 P.R. China**