

DESCRIPTION

- Metal construction with various finishes identified by suffix
- G1/2 connections
- Accessories are various by model. See the table below for details

OPERATION

- Lever Style handle
- Pull-on/ Push-off
- Temperature controlled through 90 degree arc of handle travel

FLOW

- Flowrate at 0.1MPa is 6.0L/min minimum in tub spout, about 4.0L/min to 9.0L/min with hose and handheld shower

CARTRIDGE

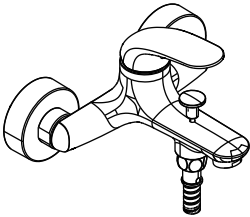
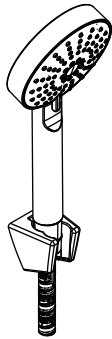
- Ceramic 35mm cartridge design
- Ceramic material

STANDARDS

- Designed to meet GB 18145

WARRANTY

- 5 years limited warranty against leaks and drips



[Optional]

WALES

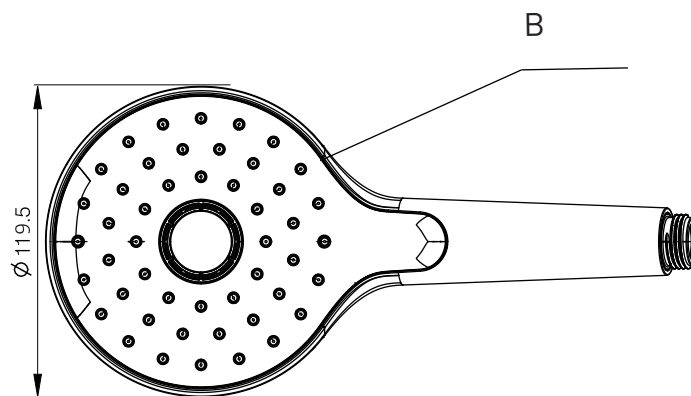
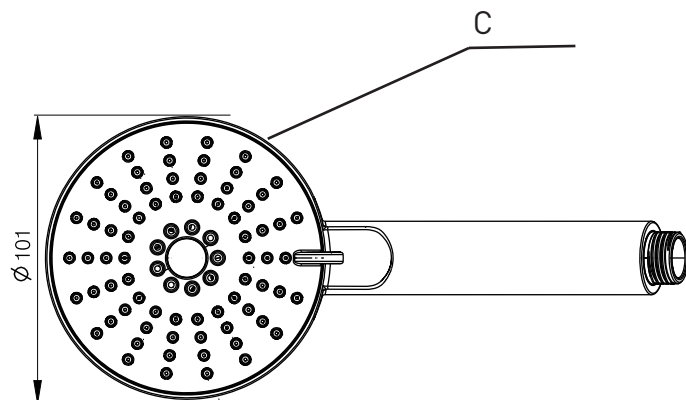
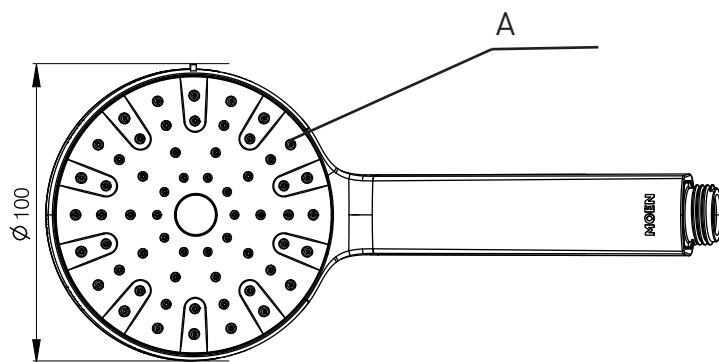
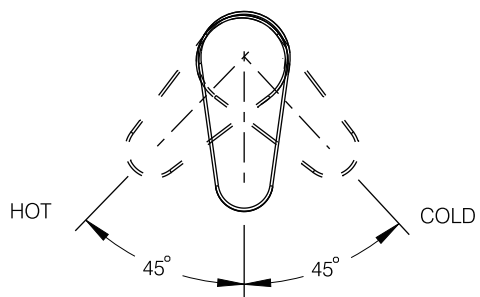
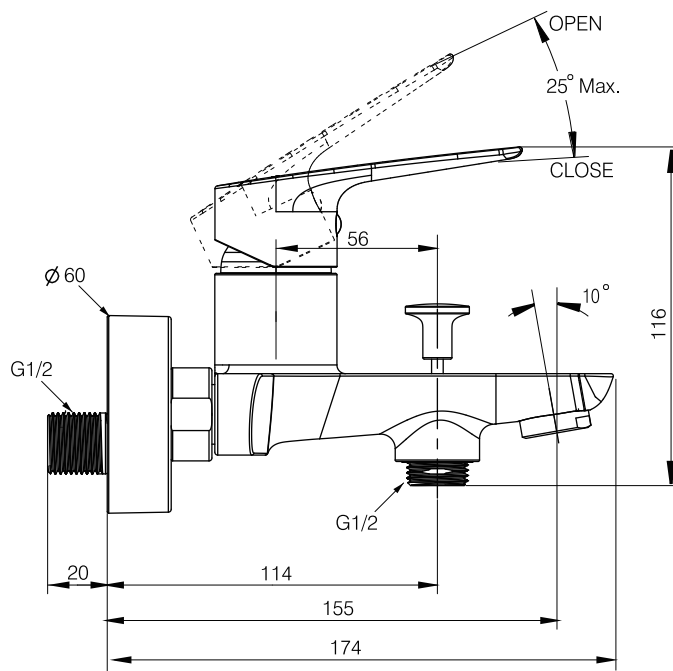
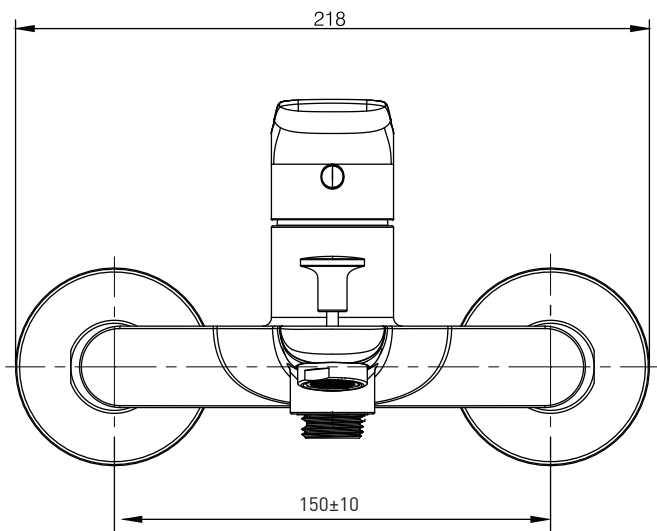
Single Handle Wall Mount Tub Shower Faucet

MODELS : 10136 Series

SKU	Handheld Shower	Function	Hose (1500mm)	Wall Bracket
10136MCL	x	N/A	√	√
10136BP	A	1F	√	√
10136	A	1F	√	√
10136WK	A	1F	√	√
10136BL	A	1F	√	√
10136MCL01	x	N/A	√	x
10136H	B	1F	√	√
10136MCL02	C	3F	√	√
10136BLWK	A	1F	√	√
10136MBL	x	N/A	√	√

CRITICAL DIMENSIONS DO NOT SCALE

Unit: mm



CRITICAL DIMENSIONS DO NOT SCALE

Unite: mm