

DESCRIPTION

- Metal construction with various finishes identified by suffix
- G 1/2 connections
- Thermostatic valve design
- Includes 3F hand-held shower and 1500mm shower hose

OPERATION

- Knob style handle
- Temperature handle operates through a 237° arc with maximum cold at full clockwise rotation and maximum hot at full counterclockwise rotation
- Safety stop preset temperature at 38°C
- Factory established temperature range from 15°C to 49°C

FLOW

- Flowrate at 0.1Mpa is about 9.0L /min in tub spout, 4.2L/min with hose and handheld shower

CARTRIDGE

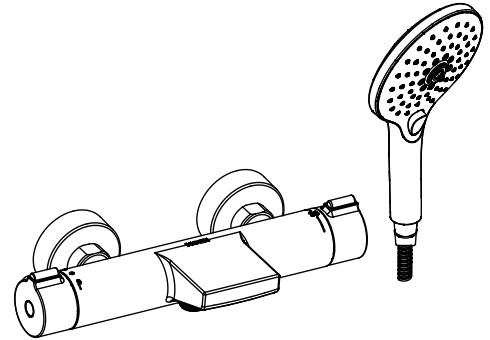
- Thermostatic cartridge design with Nonmetallic/no-ferrous material

STANDARD

- Designed to meet QB2806

WARRANTY

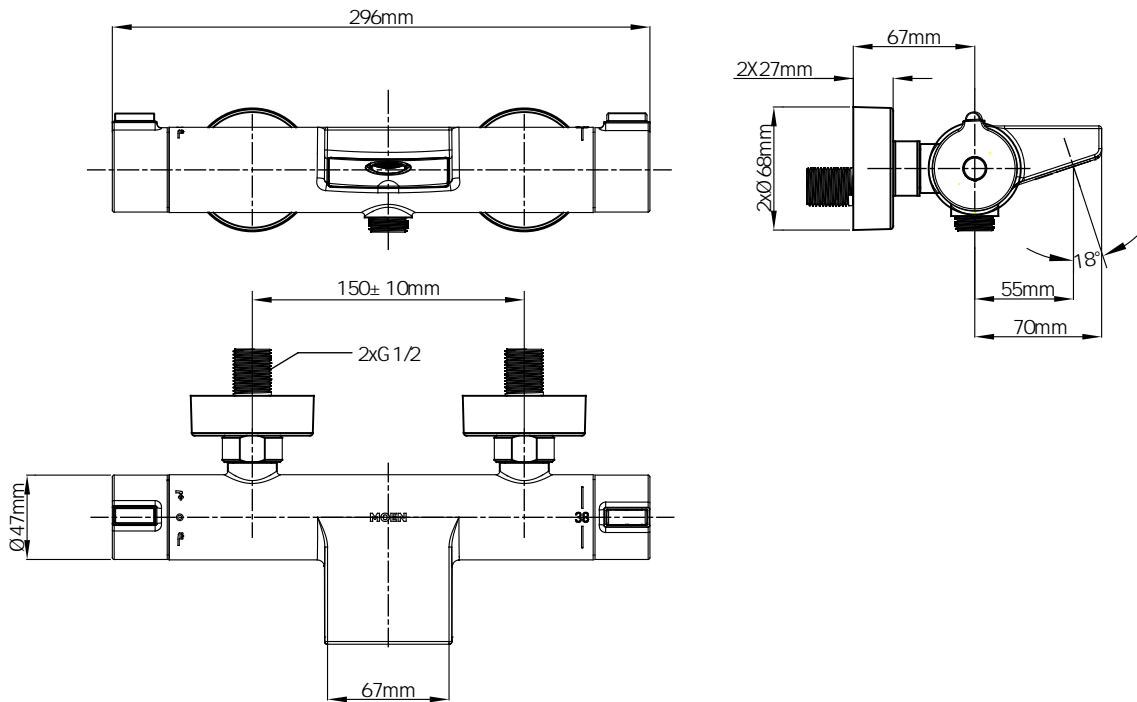
- 5 years limited warranty against leaks and drips



FASCINATION SERIES

THERMOSTATIC TUB/SHOWER FAUCET

Models: 63332H/ 63332HBL



CRITICAL DIMENSION

(DO NOT SCALE)

Usage :

1. Usage of Diverter handle :

Shower faucet Diverter handle can be rotated by 90°, with functions of Handheld shower , Off.

Tub/Shower faucet Diverter handle can be rotated by 180° , every 90° have one function:

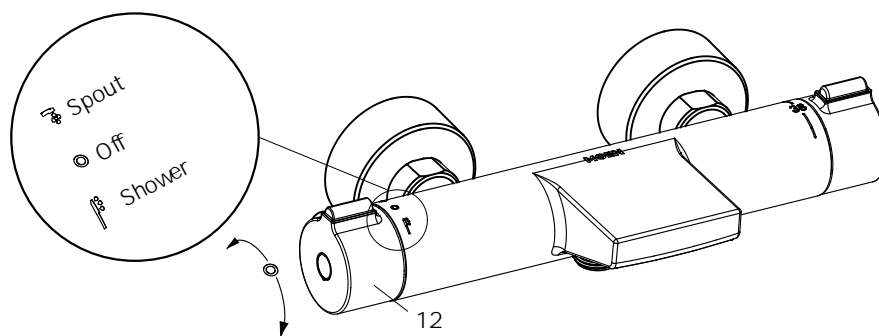
Off, Handheld shower , Spout

1.1 The diverter valve controls the off, handshower and spout

1.2 Turn the diverter handle to " Off ", turn off.

1.3 Turn the diverter handle to " Shower ", the water sprays from handheld shower.

1.4 Turn the diverter handle to " Spout ", the water comes out from spout



Rotate control handle(12) in clockwise/anti-clockwise 90° to transfer functions (off/shower/spout)

2.Usage of controlling temperature of water by the handle with a button(14):

Factory established temperature range from 20°C to 49°C ;

Safety stop preset temperature at 38°C calibration;

1.1 Turn the handle (13) clockwise , water temperature will turn to 20°C from 38°C;

1.2 Press the button down and turn the handle(14) anticlockwise, water temperature will up to 49°C;

