

DESCRIPTION

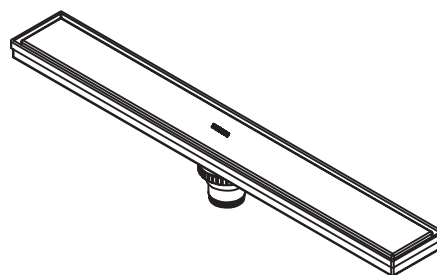
- Stainless Steel with polishing
- Two methods for cover installation, i:cover+marble;ii:cover
- With the clean and replaceable check valve device

STANDARDS

- Comply with GB/T 27710-2011
- Stainless Steel pass AASS 24H grade 10
- Flow rate 0.61l/s

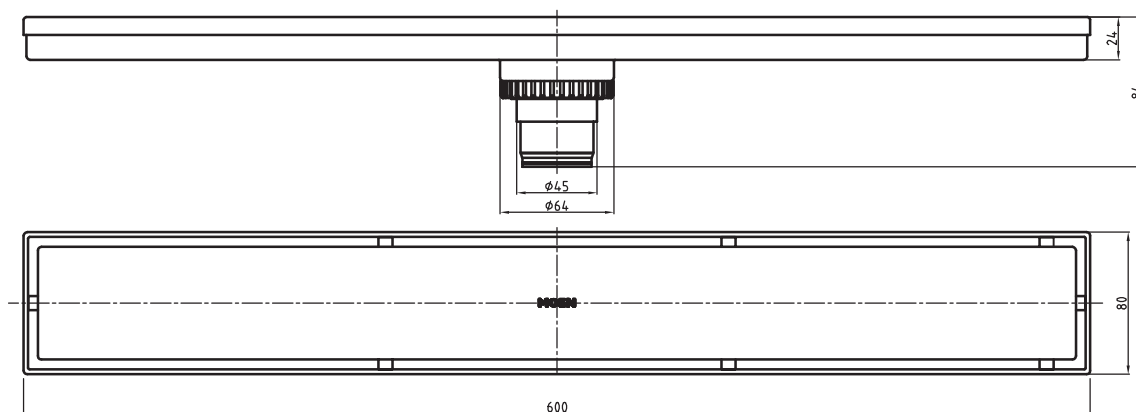
WARRANTY

- 1 years limited warranty except artificial damage and chemicals erosion

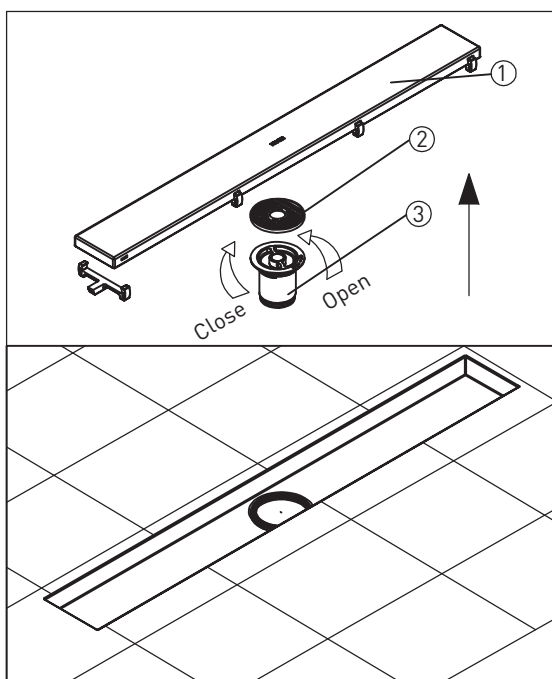


LONG FLOOR DRAIN(ST.ST)

MODELS: 3969 series



Clean and replace step



CRITICAL DIMENSIONS DO NOT SCALE